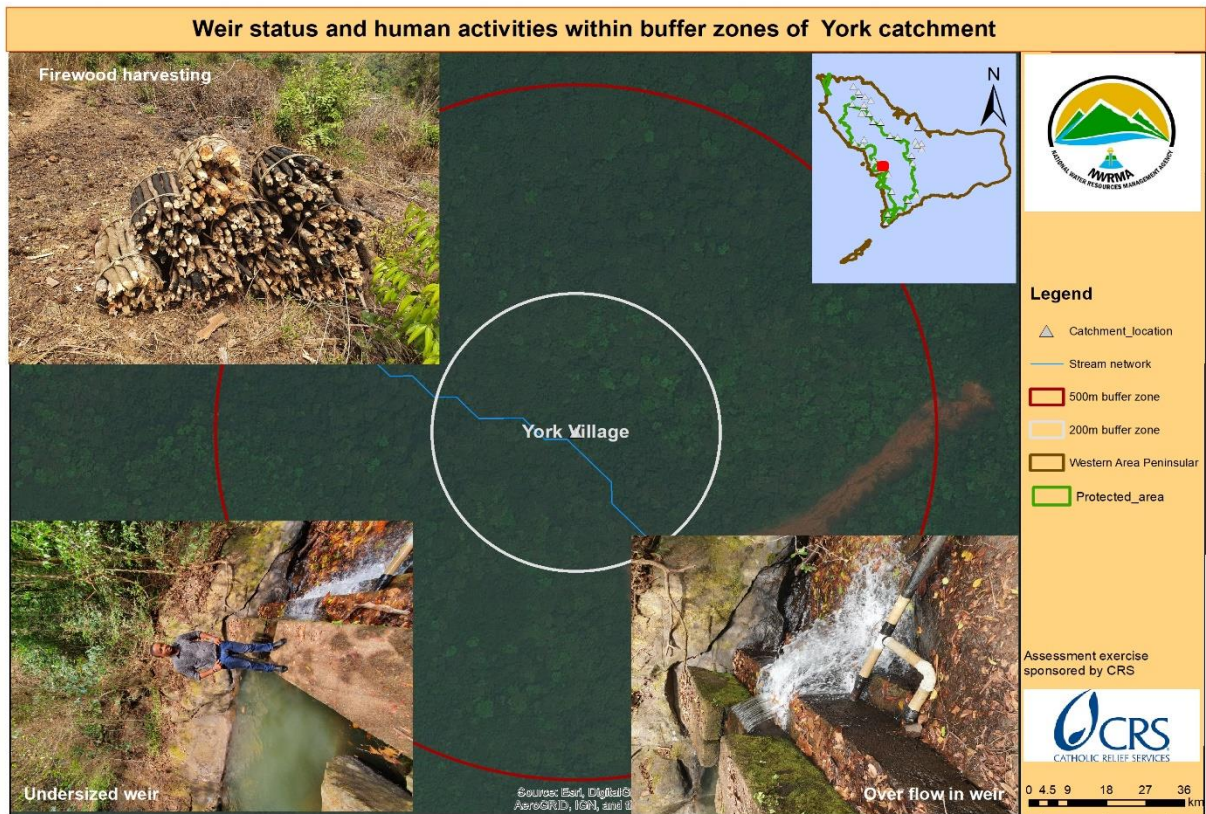
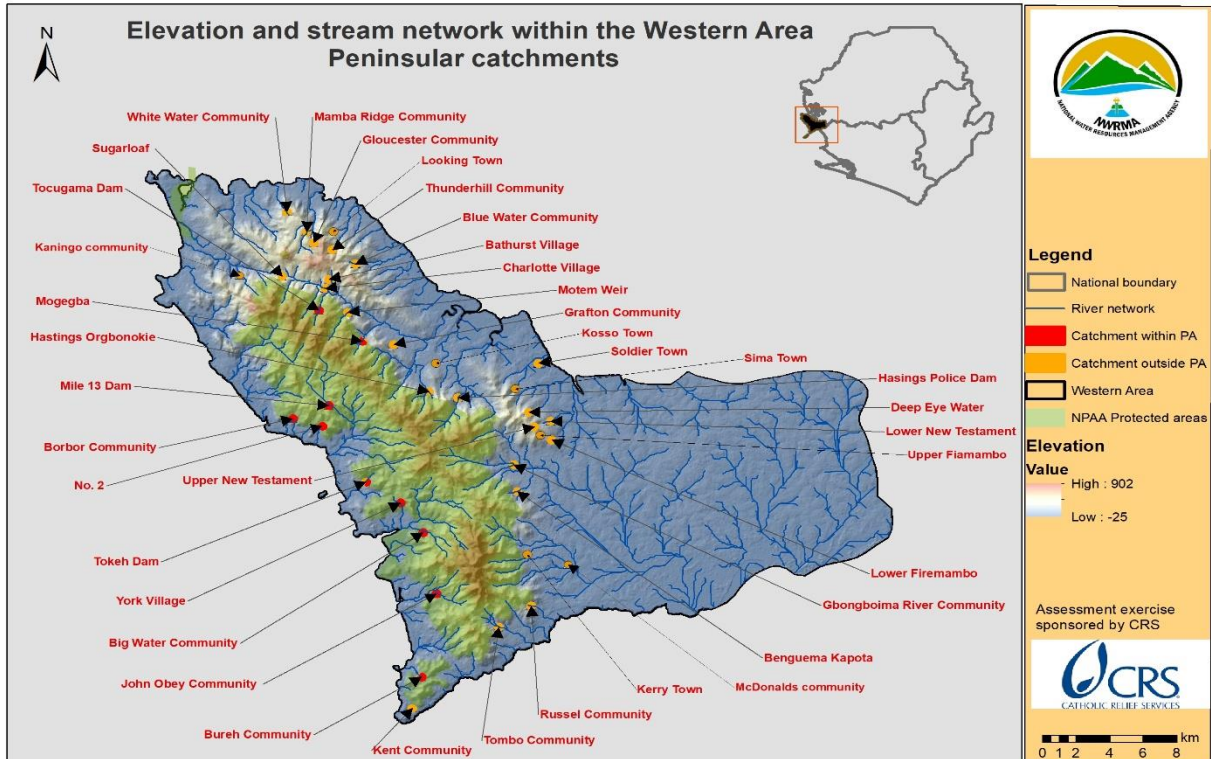
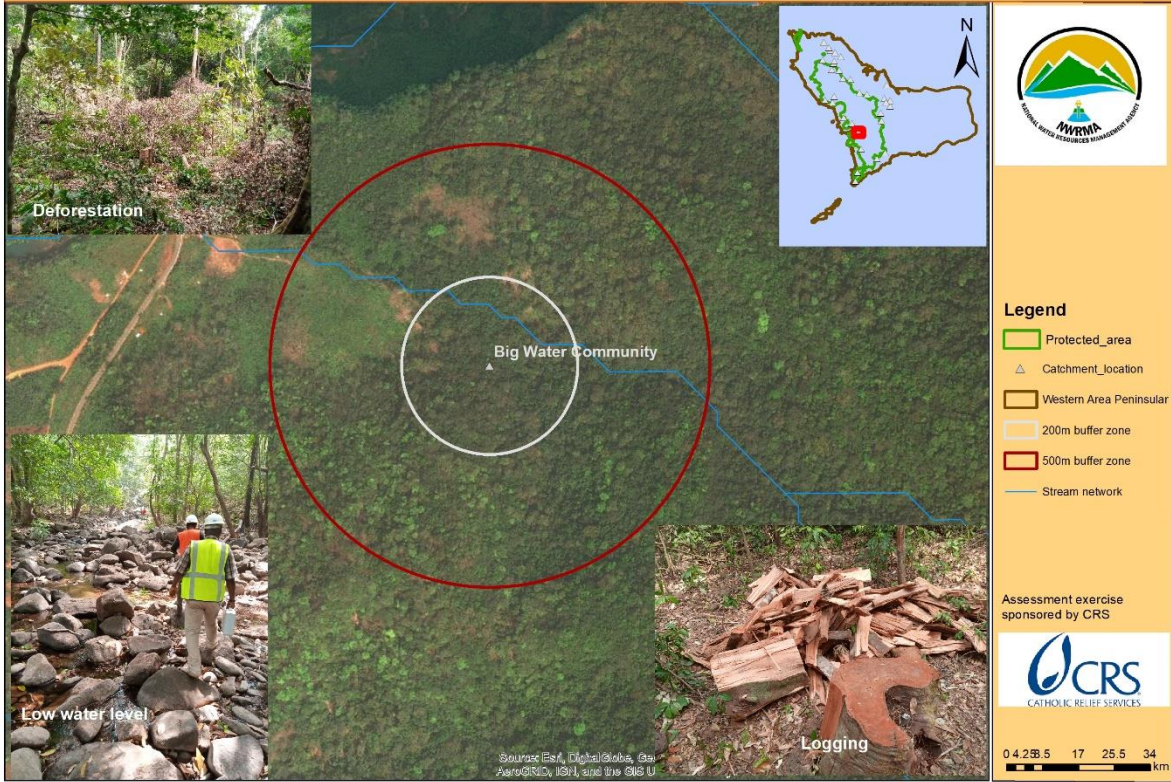


# 14.0 Appendices

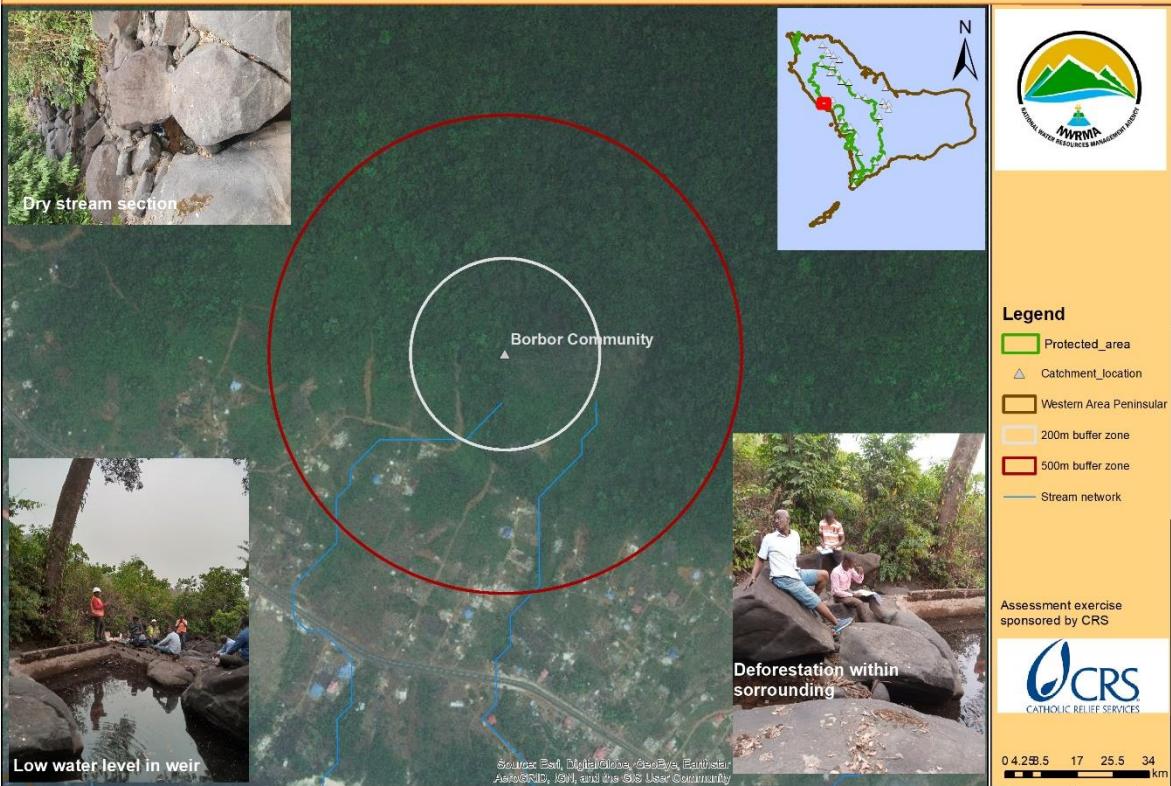
Maps of water sources with human activities within catchment areas.



### Stream status and human activities within buffer zones of Big Water catchment



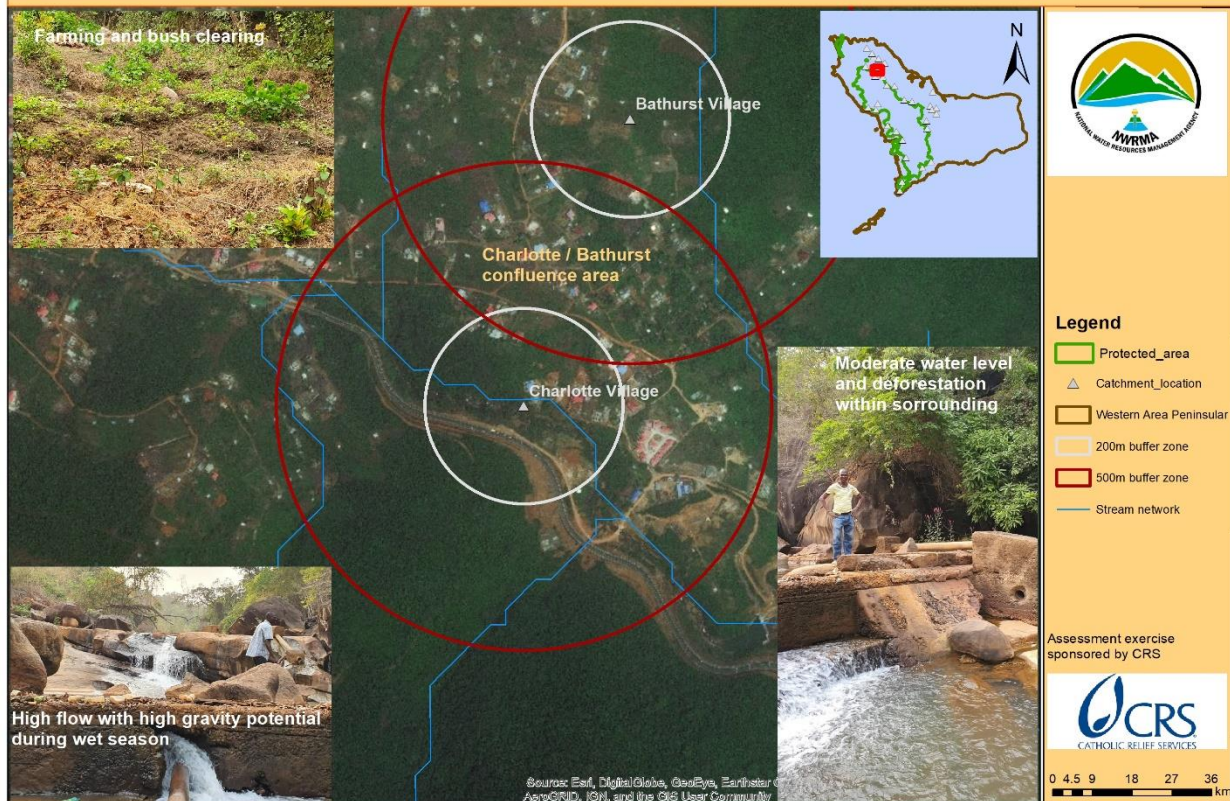
### Weir status and human activities within buffer zones of Bobor catchment



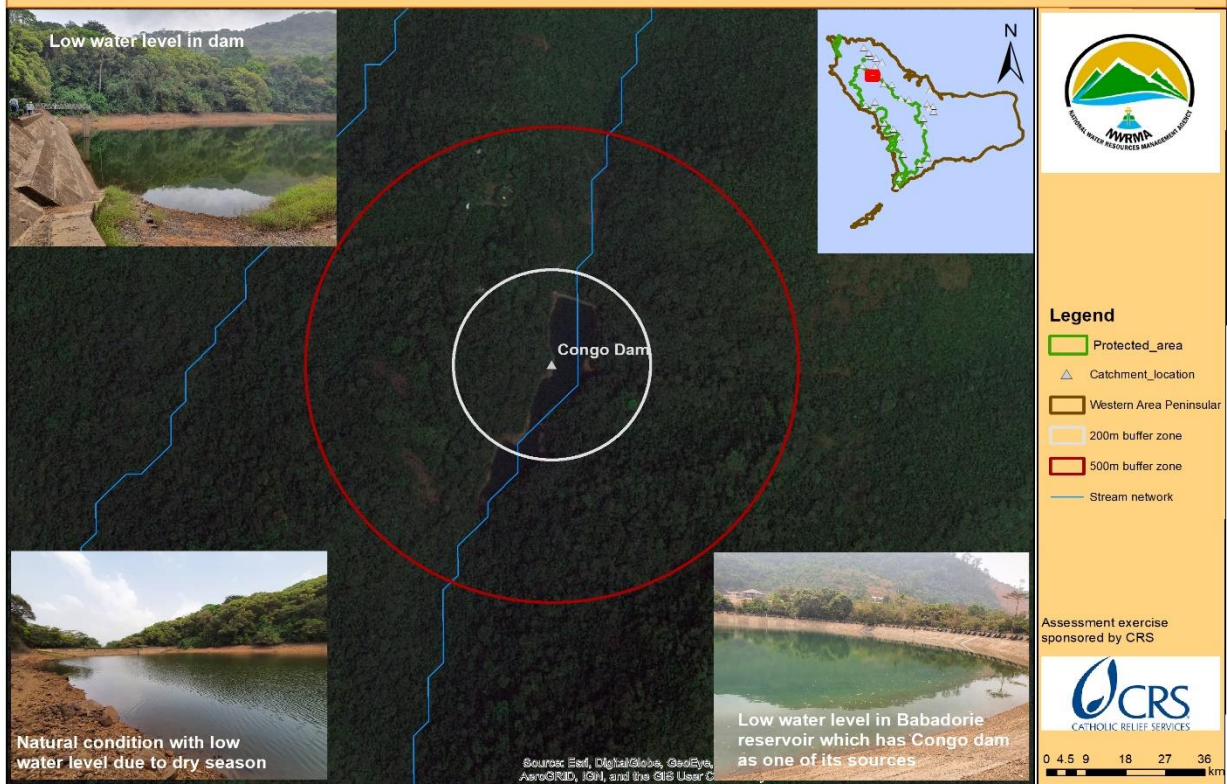
## Weir status and human activities within buffer zones of Bureh catchment



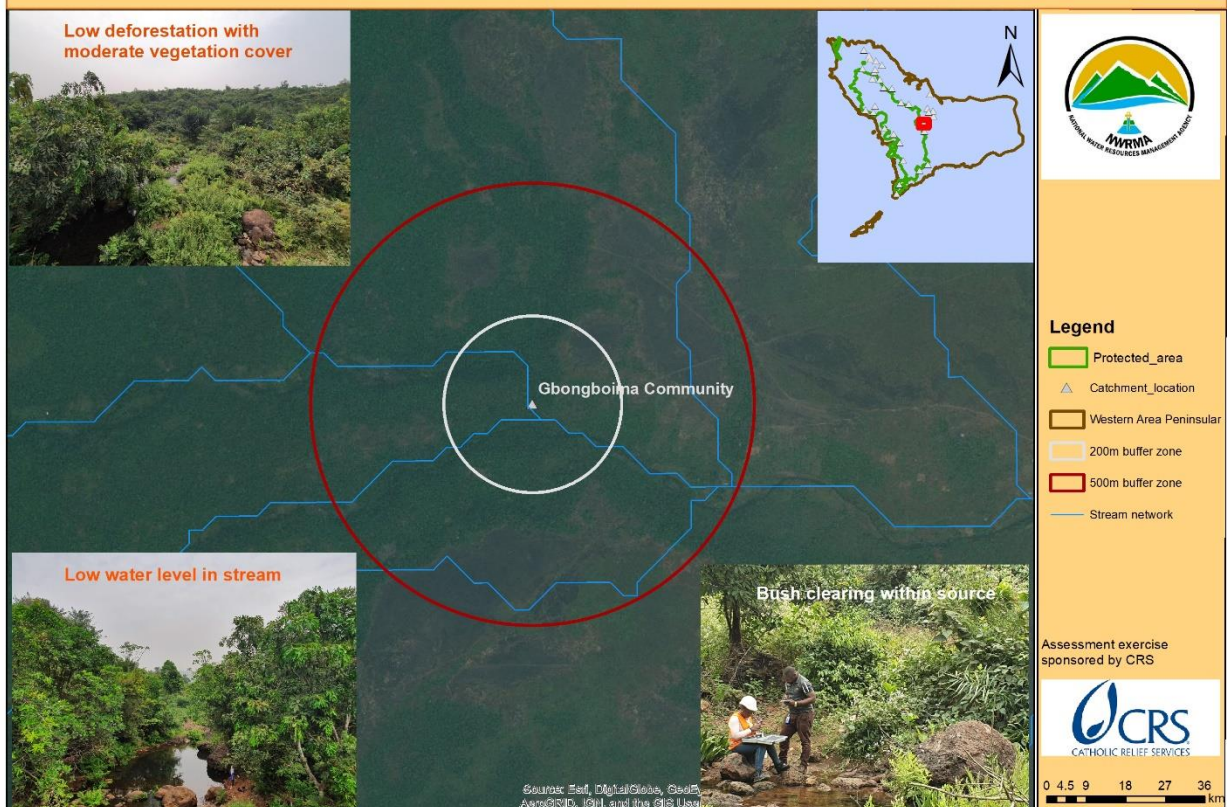
## Weir status and human activities within buffer zones of Charlotte catchment



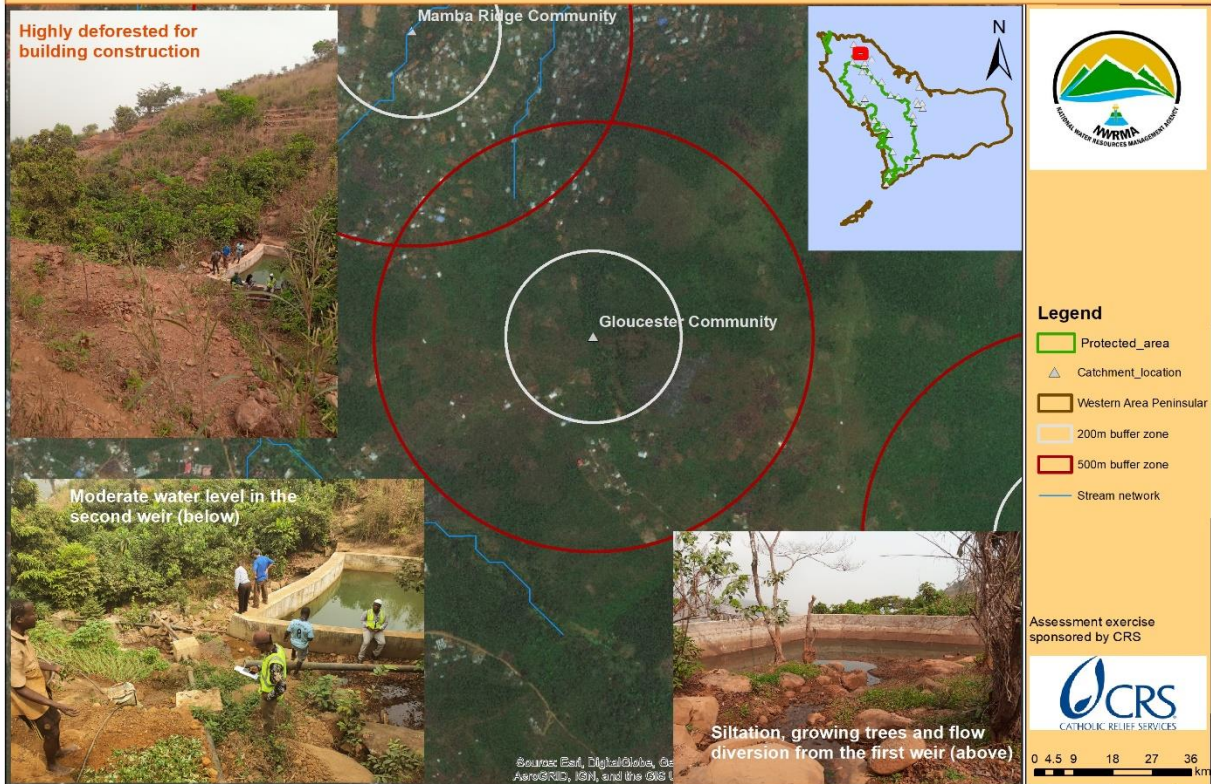
### Status and human activities within buffer zones of Congo Dam catchment



### Stream status and human activities within buffer zones of Gbongboima catchment



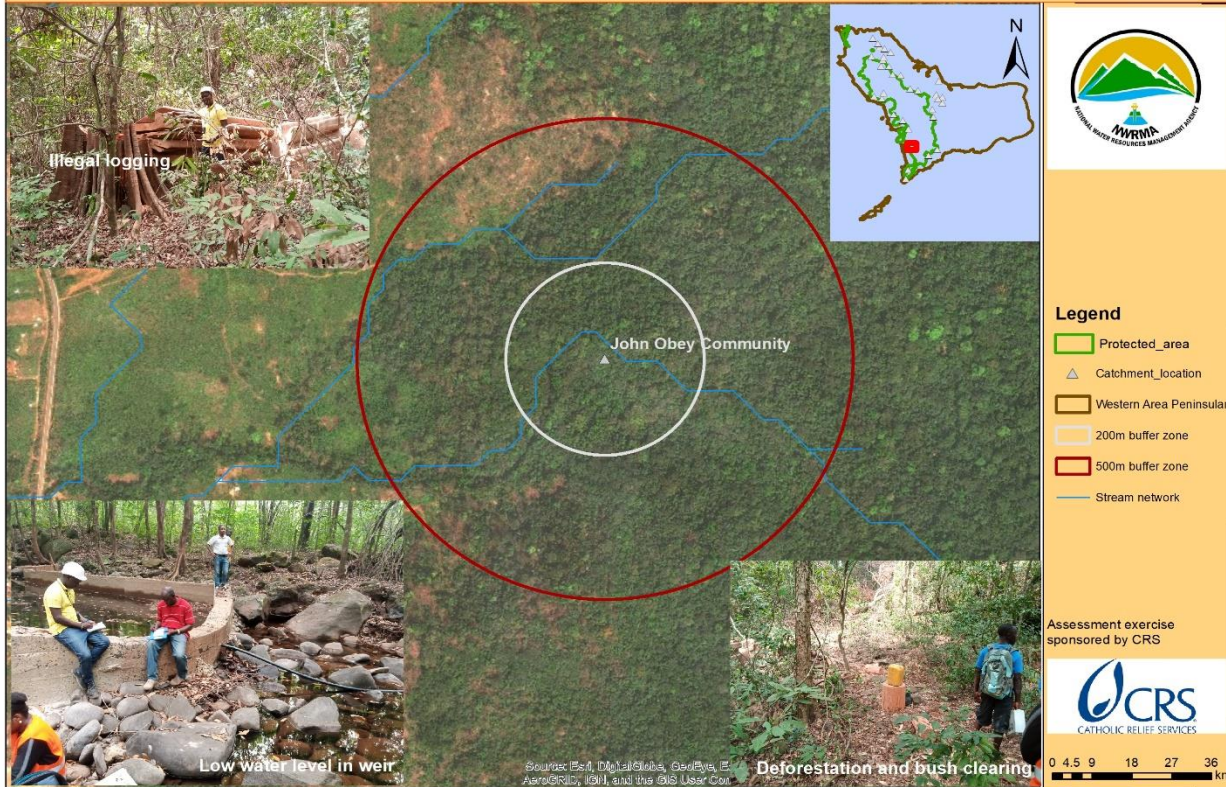
### Weir status and human activities within buffer zones of Gloucester catchment



### Weir status and human activities within buffer zones of Grafton catchment



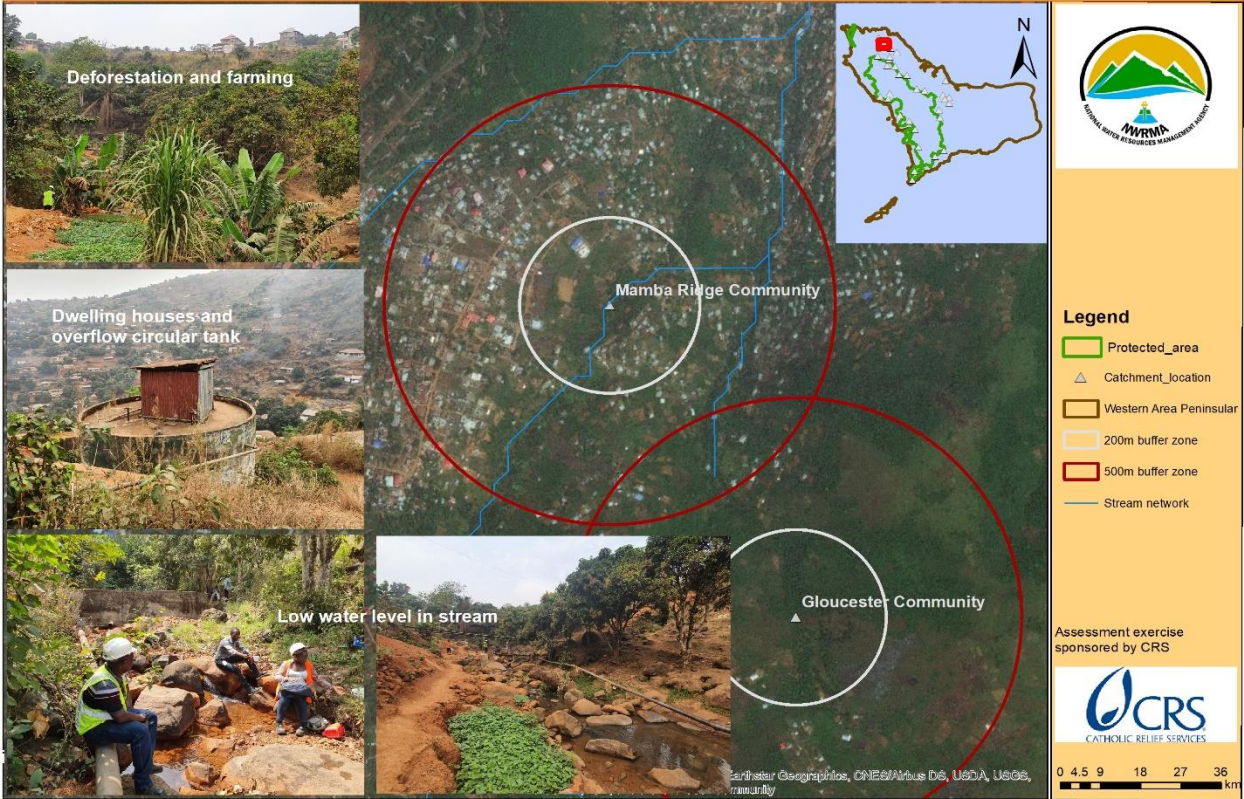
## Weir status and human activities within buffer zones of John Obey catchment



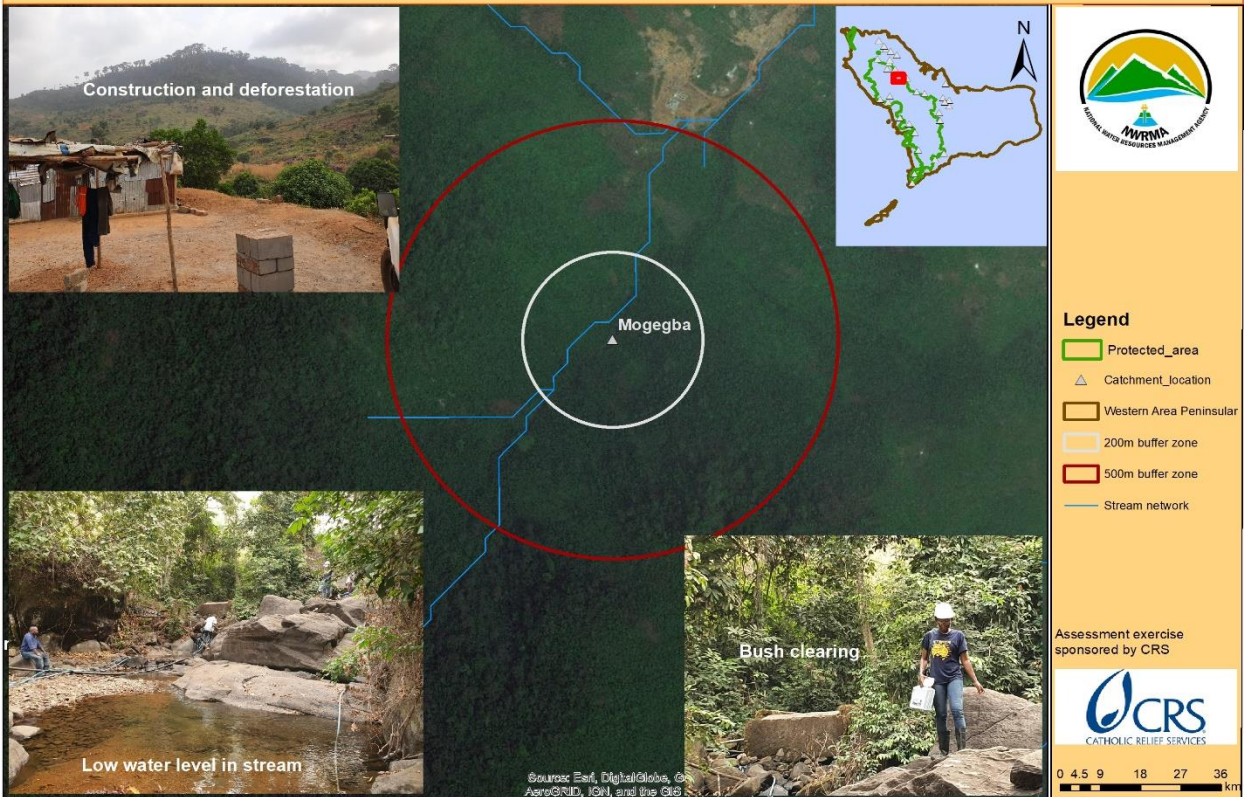
## Status and human activities within buffer zones of Kent catchment



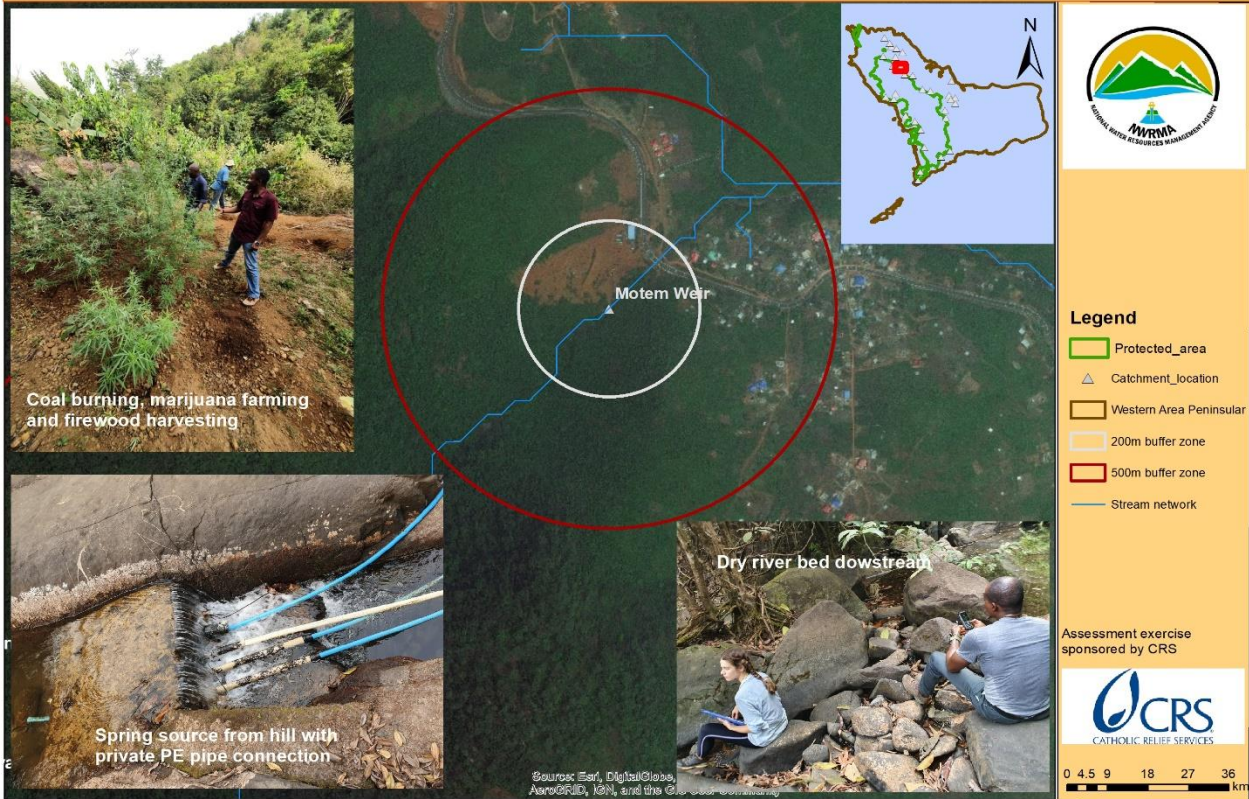
### Weir status and human activities within buffer zones of Mamba Ridge catchment



### Weir status and human activities within buffer zones of Mogegeba catchment



## Weir status and human activities within buffer zones of Mortem catchment



## Weir status and human activities within buffer zones of No. 2 catchment

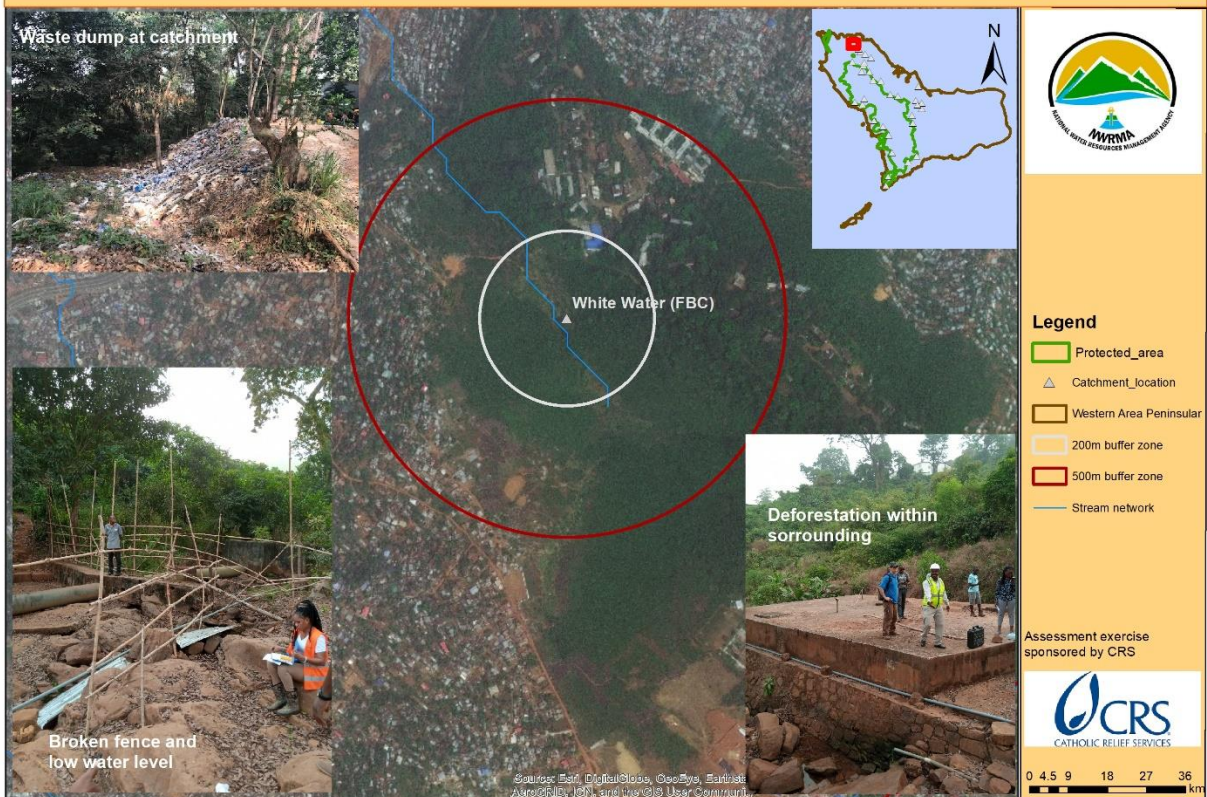




## Weir status and human activities within buffer zones of Upper New Testament



## Weir status and human activities within buffer zones of White Water catchment



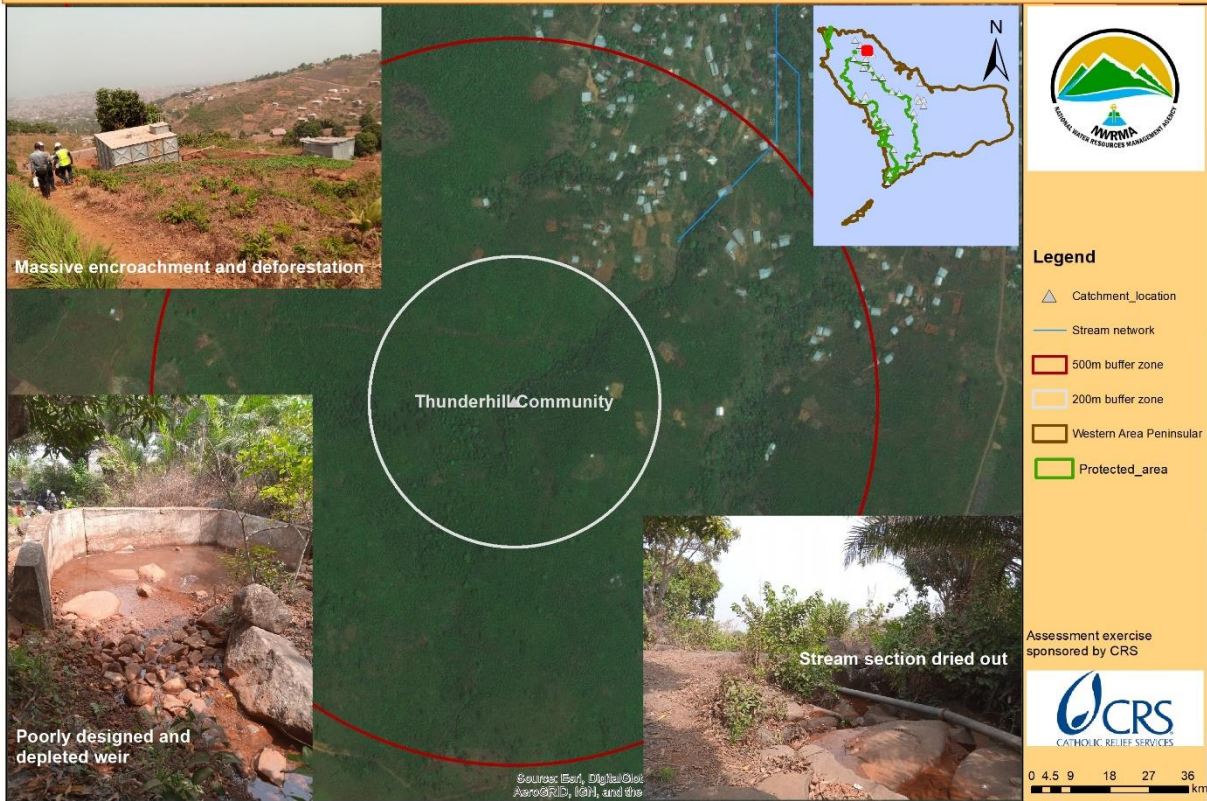
### Weir status and human activities within buffer zones of Tombo catchment



### Weir status and human activities within buffer zones of Upper Fiamambo



## Weir status and human activities within buffer zones of Thunder Hill catchment



## Weir status and human activities within buffer zones of Tokeh catchment



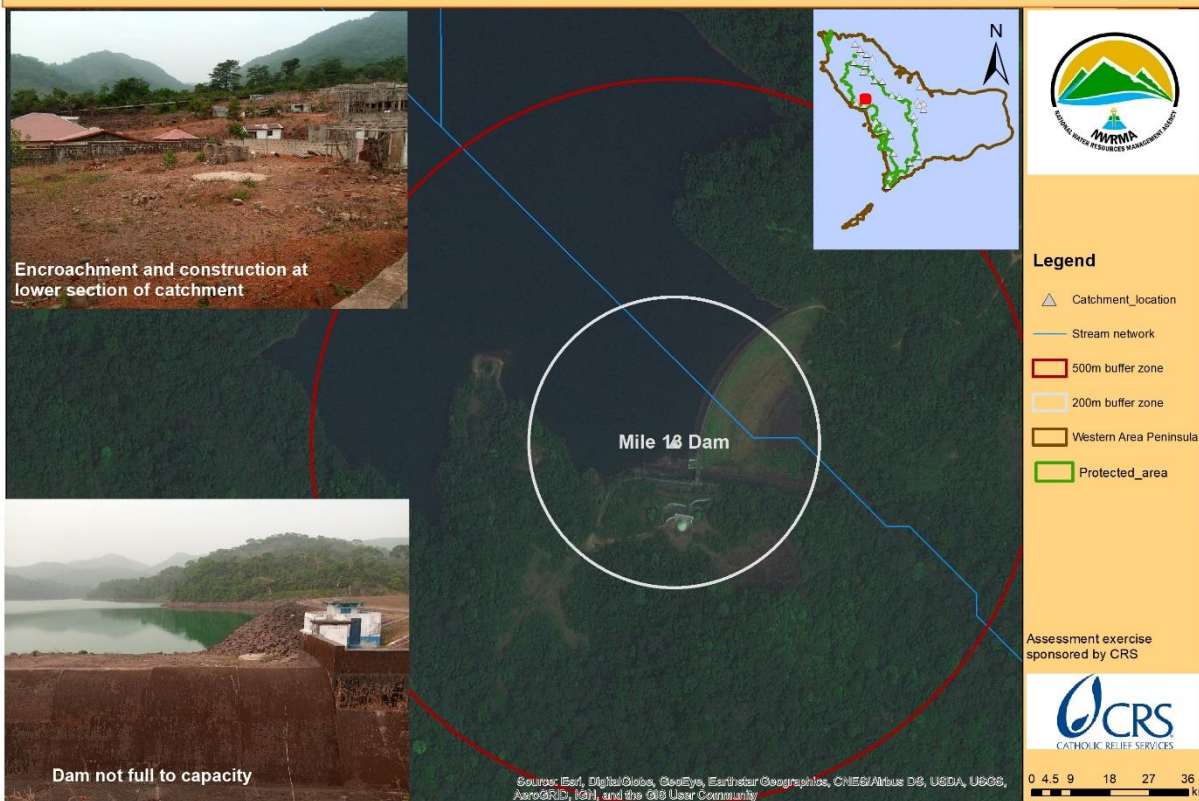
### Weir status and human activities within buffer zones of Sima Town



### Status and human activities within buffer zones of the Sugarloaf and the Babadorie Reservoir



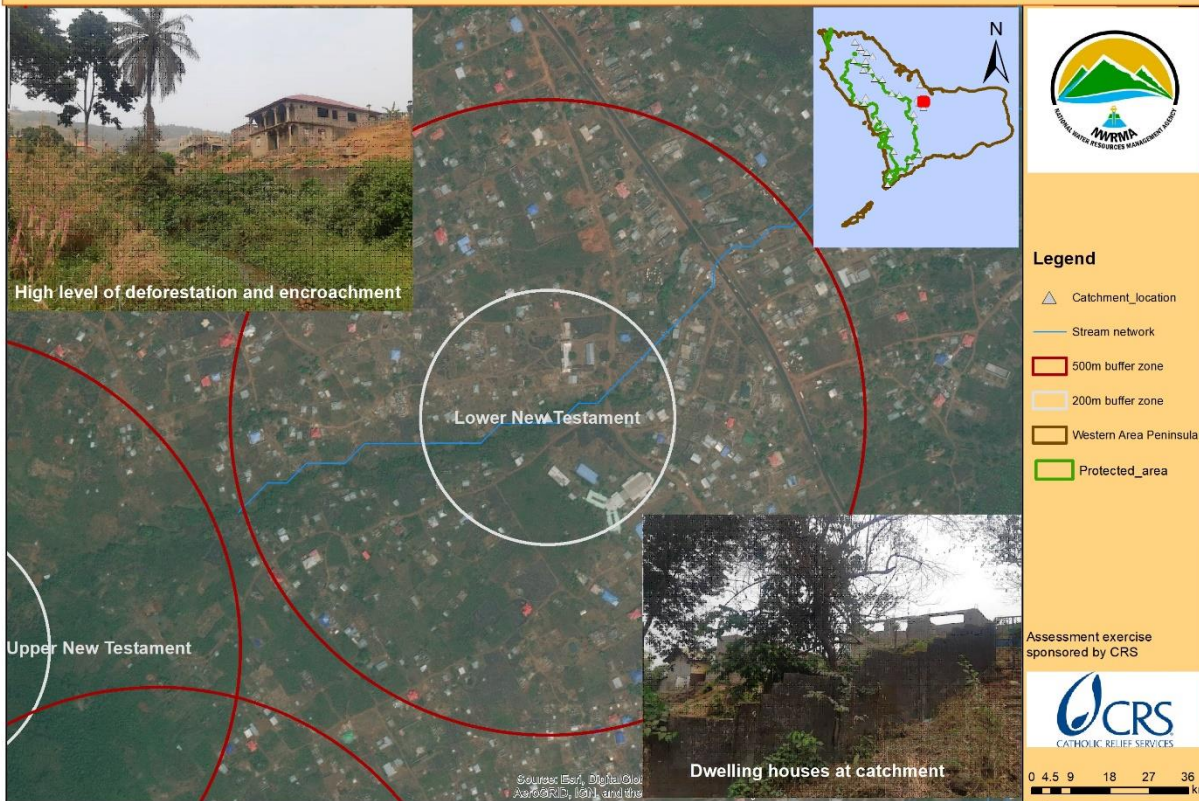
### Dam status and human activities within buffer zones of Mile 13 catchment



### Weir status and human activities within buffer zones of Russel catchment



### Weir status and human activities within buffer zones of Lower New Testament



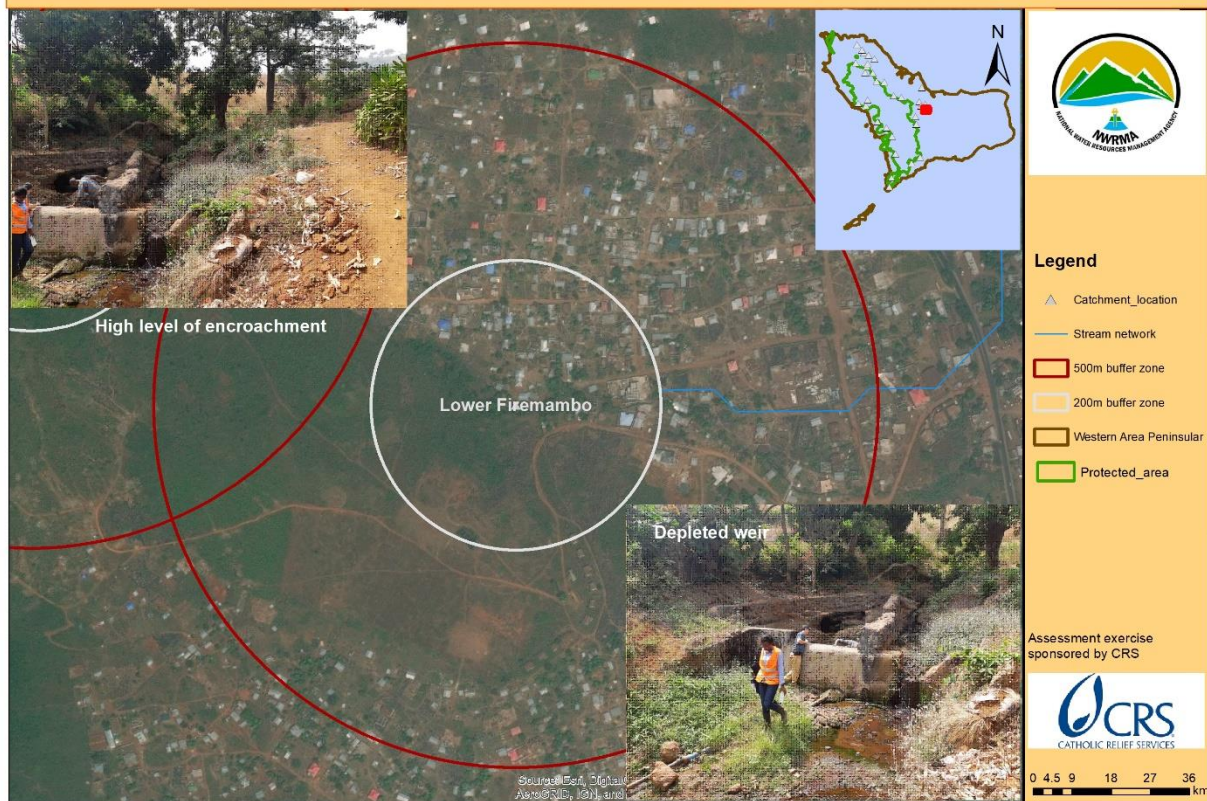
### Weir status and human activities within buffer zones of McDonalds Community



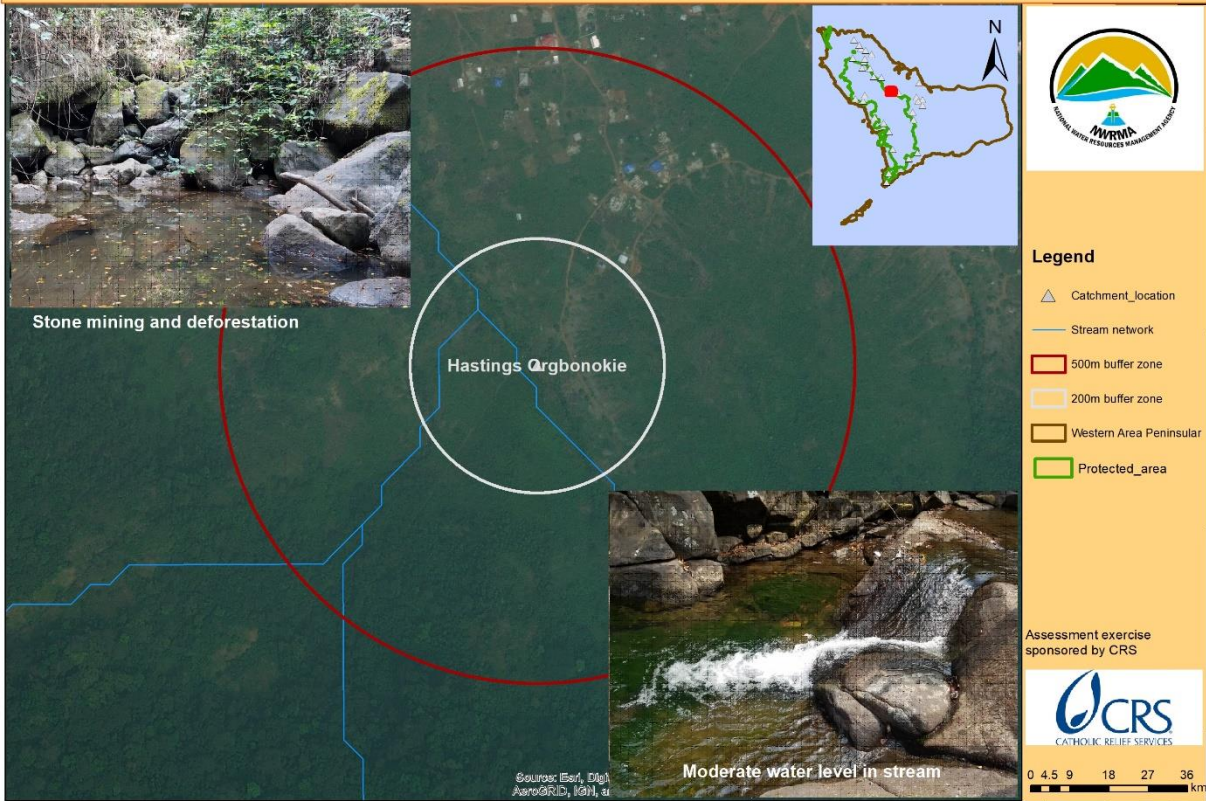
## Weir status and human activities within buffer zones of KossoTown



## Weir status and human activities within buffer zones of Lower Fiamambo



## Weir status and human activities within buffer zones of Hastings Orgbonokie

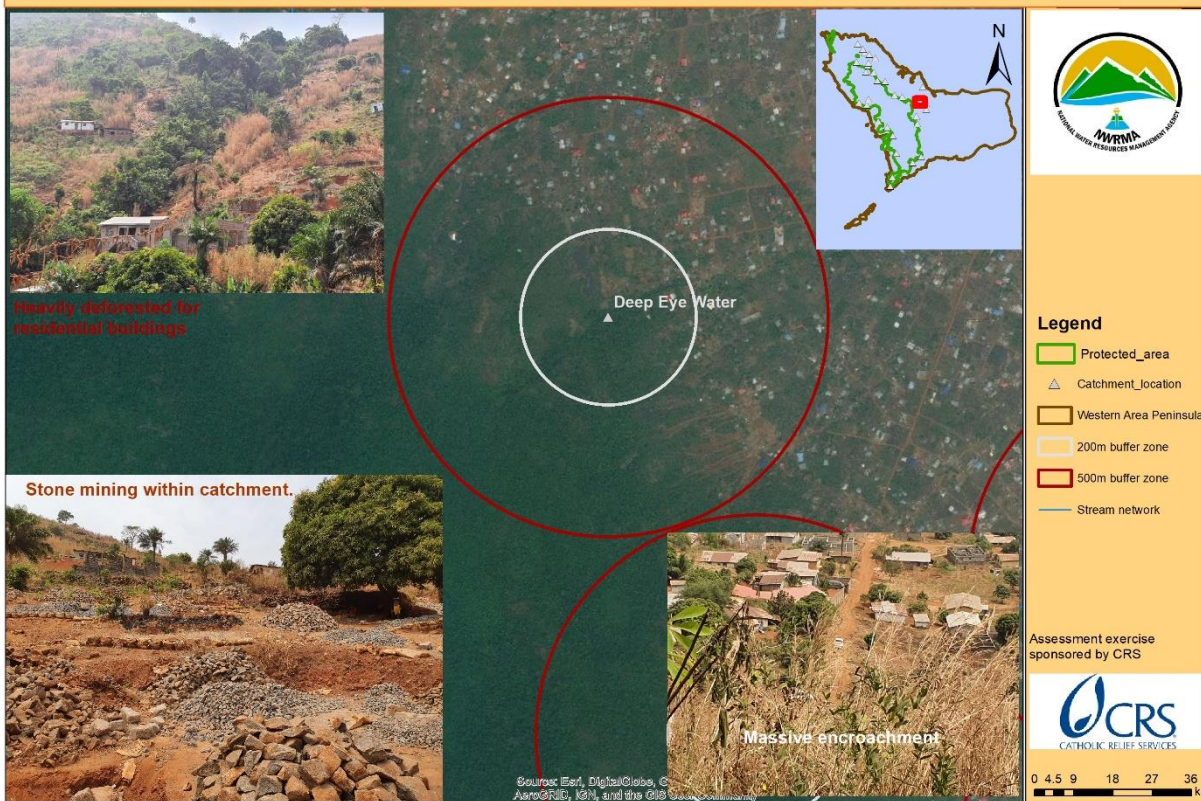


## Weir status and human activities within buffer zones of Kaningo catchment





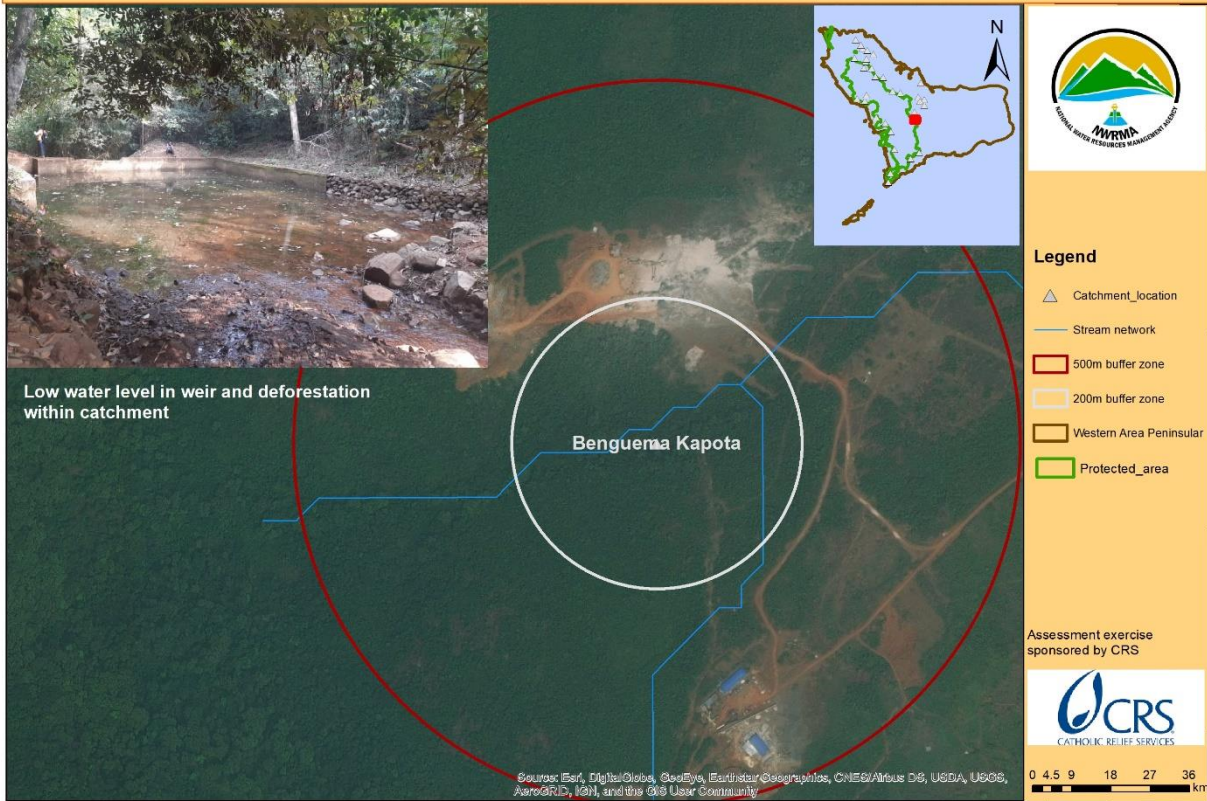
## Weir status and human activities within buffer zones of Deep Eye Water catchment



## Weir status and human activities within buffer zones of Hastings Police Dam



## Weir status and human activities within buffer zones of the Benguema Kapota catchment



## Weir status and human activities within buffer zones of the Blue Water Cemetery catchment



## Weir status and human activities within buffer zones of Bathurst catchment



## Weir status and human activities within buffer zones of Benguema

