

We welcome global researchers, practitioners and policymakers to join our network!

## AT A GLANCE

LASER (Long-term Assistance and Services for Research) PULSE (Partners for University-Led Solutions Engine) is a five-year (2018-2023), \$70 million program funded through USAID's Innovation, Technology and Research Hub, that delivers research-driven solutions to field-sourced development challenges in USAID partner countries. It operates in most USAID development sectors. The LASER PULSE consortium includes Purdue University (Prime), Catholic Relief Services, Indiana University, Makerere University and the University of Notre Dame.



Photo courtesy of Purdue University

## HOW DO WE ACHIEVE OUR OBJECTIVE?

LASER PULSE enhances the discovery, and application in policy and practice, of research-driven solutions to development challenges through the following components:



**Global Network:** Convenes 2,500+ researchers, practitioners and policymakers in 61 countries, including all USAID partner countries



**Research Needs Identification:** Identifies research needs by using a systems framework and collaborating with USAID Missions, Bureaus, Institutes and Offices, and other local stakeholders



**Research Funding:** Awards competitive grants with core funding and USAID buy-ins for researcher-practitioner teams to generate research-driven solutions to field-sourced challenges that translate into policy and practice



**Embedded Research Translation:** Promotes an iterative co-design process among academics, practitioners and other stakeholders, in which research is intentionally applied to a development challenge



**Gender Integration:** Funds research that integrates gender considerations to address inequalities that are barriers to development and human rights



**Capacity Strengthening:** Supports funded teams and the LASER PULSE network to strengthen capacity for development research and research translation, and thus contributes to USAID partner countries on their Journey to Self-Reliance

## QUICK FACTS

**Duration:** 5 years (2018-2023)

**Budget:** \$70 million

**Consortium:** Purdue University (prime), Catholic Relief Services, Indiana University, Makerere University and the University of Notre Dame

**Network:** 2,500+ researchers and practitioners in 61 countries

**Sectors:** Most USAID development sectors

**Geography:** All USAID partner countries

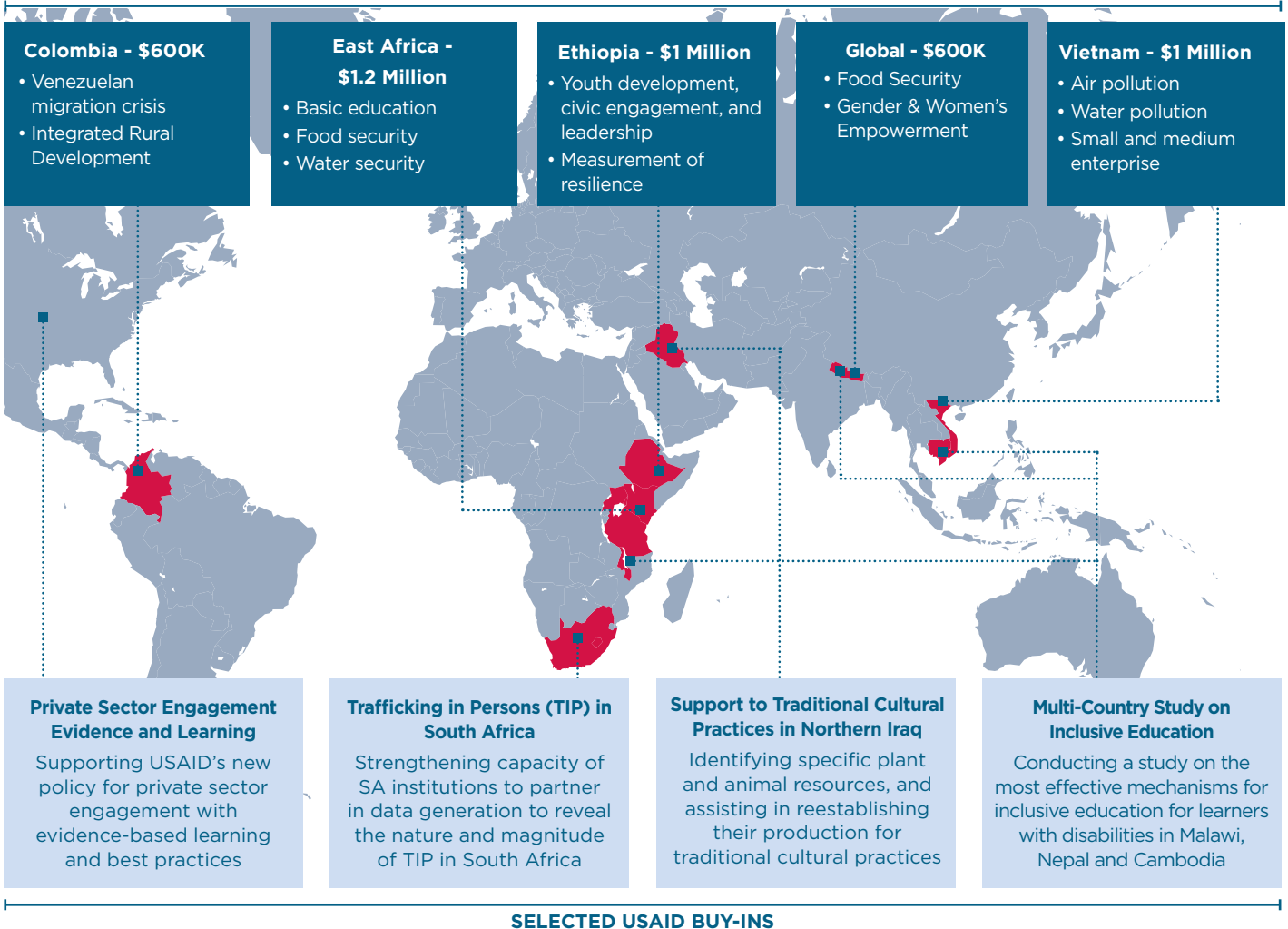
### Research funding mechanisms:

Competitive grant awards and USAID buy-ins for researcher-practitioner teams

## DEVELOPMENT CHALLENGES: WHAT AND WHERE?

LASER PULSE has awarded approximately \$4.5 million in research funding through the five sets of core awards summarized below. In addition, LASER PULSE has funded 15 researcher-practitioner teams through \$23.7 million in USAID buy-ins to date. Four of the buy-ins have been selected as examples in the map below. LASER can partner with any USAID Mission, Bureau, Institute or Office to fund development research through buy-ins to its current cooperative agreement. The period of performance ends July 31st, 2023 and the total ceiling available for buy-ins is \$50 million.

### CORE AWARDS



### SELECTED USAID BUY-INS

## WHY JOIN US ON OUR MISSION?

LASER PULSE is committed to delivering practical, research-driven solutions to global development challenges. Opportunities to partner with us include:

- Researchers and practitioners:** Apply for [research funding](#), find collaborators and become more visible to donors on the [LASER PULSE Network](#), attend an upcoming [LASER PULSE event](#), and access [research translation resources](#).
- Donors (USAID, implementing partners, and private sector):** Rapidly access [LASER PULSE's growing network](#) interested in solving development challenges, use a [systems framework to identify and refine research needs](#), co-create and implement research activities for policy and program recommendations, and produce technical reports with potential for co-authorship.
- For more information on LASER PULSE, visit [laserpulse.org](http://laserpulse.org), contact [laserpulse@purdue.edu](mailto:laserpulse@purdue.edu), subscribe to the [LASER PULSE quarterly newsletter](#), and follow us on [Facebook](#) and [Twitter](#).