

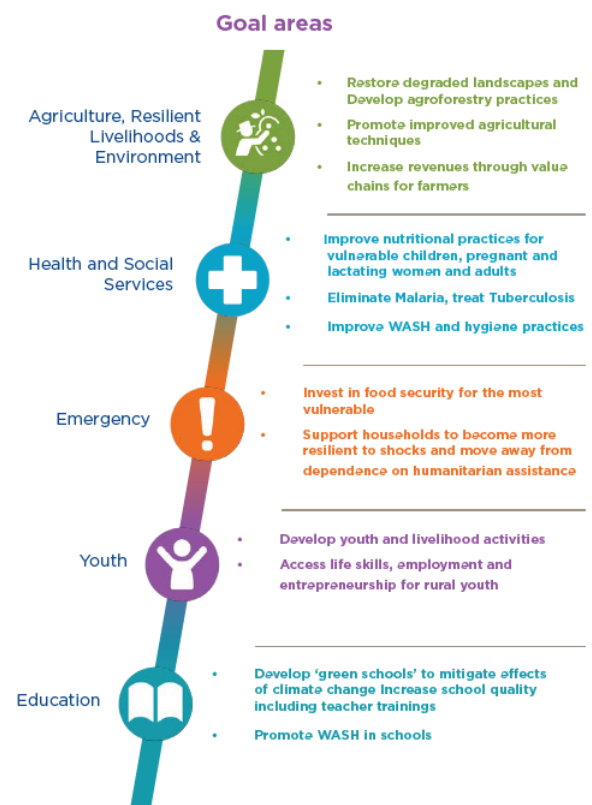


During a CRS food distribution in the village of Marojela, commune of Marolinta, Beloha district in southern Madagascar, CRS staff register who will receive supplies. On this day, 416 people from six villages received food. For the past five years, the southern region of Madagascar has been affected by recurrent droughts. Communities cannot rely on agriculture due to insufficient and unreliable rainfall. *Stipe Jim/CRS*

Catholic Relief Services Madagascar

Catholic Relief Services established in Madagascar in 1962 at the invitation of the Episcopal Conference to provide humanitarian assistance to the most vulnerable populations through innovative and sustainable development programs. Since then, CRS's Madagascar Country Program has diversified its program portfolio by intervening in several development sectors, including emergency response, agriculture and the environment, agribusiness, health and nutrition, water, sanitation and hygiene (WASH), education, good governance, gender and social cohesion.

CRS operates in all regions of Madagascar and runs 16 large- to medium-scale projects, primarily in the eastern, southeastern, northwestern, northern, and southern regions of the country, with an annual budget of approximately US\$45 million. With 800 staff members, CRS's Madagascar Country Program reaches more than 8,220,559 direct and indirect beneficiaries among the most vulnerable and marginalized segments of the Malagasy population.



NATIONAL PROJECTS

- TB
- START NETWORK



LEGEND

- MAHARO
- Zara Rano
- SPICES
- TSIRO
- ACCESS
- RIMA
- MALARIA RESEARCH PLATFORM
- RIMA LED TOTAL NUTRITION (CLTN)
- MIANATRA - FFE
- TABIRY
- COVID-19 CLINICS AND DEMAND GENERATION
- MAVITRIKA MIANATRA (MAMI)
- BAF. ELEVATING ECOSYSTEM BASED ADAPTATION APPROACH
- MIONJO

