

# GO

*annual report 2014*



# ON THE GO FOR 70 YEARS

*Go out and share your testimony, go out and interact  
with your brothers, go out and share,  
go out and ask. Become the word in body as well as spirit.*

POPE FRANCIS

WE WORK IN

**101**

COUNTRIES, WITH  
1,105 PARTNERS

**92 percent**

OF OUR ANNUAL BUDGET  
GOES TO CRS PROGRAMS  
THAT SERVE THE POOR  
OVERSEAS

**85 million**

PEOPLE BENEFITED FROM  
CRS PROGRAMS IN 2014

Catholic Relief Services was established by the Catholic bishops of the United States during World War II. Our mission then was bringing humanitarian relief to war-torn Europe.

More than 70 years later, the world has changed, and we have changed with it. Today CRS is one of the largest and most trusted organizations of its kind. We serve poor and vulnerable people on five continents. We respond to floods, famine, earthquakes, violent conflict and other emergencies, including complex disasters that displace millions of people. We've expanded our mission, providing not only immediate relief in response to crisis, but also lasting change to break the cycle of poverty through community-based development programs.

One thing that has not changed is our determination to *go*. We work on the ground, in the field, wherever and whenever we are needed most. We are grateful for the trust and hard work of our partners, and the generous support of our donors, who in 2014—a year of widespread suffering and strife—stood in solidarity with the world's poorest and most vulnerable people.

*Pilgrims sing in unison as they  
leave a sunrise Mass in Boda,  
Central African Republic.*

*Photo by Sam Phelps for CRS*



# ANSWERING THE CALL



.....  
*“We go where there is conflict,  
to build peace. We go where  
there is hunger, to sow  
seeds. We go where there is  
hopelessness, to renew faith.”*  
.....



*Dr. Carolyn Y. Woo, President and  
CEO, Catholic Relief Services,  
speaks about the benefits of  
impact investing at a 2-day  
event in Rome that included  
U.S. Agency for International  
Development Administrator  
Rajiv Shah and other dignitaries.*

*Photo by Luca Lo Iacono for CRS*

At Catholic Relief Services we are privileged to live the Gospel every day—to go out into the world, to serve the poor, and to experience the power of joining together with our dedicated donors, colleagues and Church partners to do God’s work.

Through the generosity of people like you, our reach extends to the world’s most impoverished, at-risk communities. We go where there is conflict, to build peace. We go where there is hunger, to sow seeds. We go where there is hopelessness, to renew faith.

In challenging times, the news of strife and despair can seem overwhelming. But at CRS, our faith is continuously renewed by progress. Whenever we answer Christ’s call, we are blessed with the opportunity to make an impact—whether we are training workers to rebuild homes in disaster-afflicted communities, facilitating loans for small-scale farmers in drought-stricken regions, or providing basic vaccines for children orphaned by war. During fiscal year 2014, CRS journeyed far and wide, responding to poverty and injustice around the world. One step at a time, we touched the lives of 85 million people. One step at a time, we turned your generous contributions into shelter, food, water, education, health care, economic opportunity and human dignity.

As we look forward to the future, we are committed to going out into the world with all the energy, imagination and courage that God expects of us and inspires in us.

May blessings overflow,

*Carolyn Y. Woo*

**DR. CAROLYN Y. WOO**  
*President & CEO*

.....  
*“CRS is a powerful  
antidote to indifference,  
ensuring that the voices of  
the poor and the suffering  
are heard.”*  
.....



*Archbishop Paul S. Coakley  
of Oklahoma City and a  
CRS delegation witness the  
destruction caused by the  
Hamas-Israel conflict.*

*Photo by Shareef Sarhan for CRS*

In October, I had the privilege of traveling with Catholic Relief Services to the Middle East. Violent conflict and political instability have contributed to a crisis of catastrophic proportions in Gaza, Jerusalem and the Kurdish region of Iraq. I was able to see first hand the lifesaving impact of CRS’ emergency response programs, which provide transitional housing, medical care and protection for people fleeing war and persecution in the Middle East and around the world.

“Don’t forget us,” was the message we heard throughout our travels. We never will. Around the world, CRS is a powerful antidote to indifference, ensuring that the voices of the poor and the suffering are heard.

In the Middle East, the Philippines, Central African Republic, South Sudan, Liberia and in other places where people urgently needed our help in 2014, CRS was there. Just as important, CRS has remained to help people rebuild and recover sustainable livelihoods. We do this by developing innovative tools and programs that make a lasting impact. Long after a crisis leaves the headlines, CRS continues working on behalf of hope and human dignity.

Reflecting on my first year as chairman of the CRS Board of Directors, I am immensely grateful for this institution, its donors and aid partners, and its essential mission. Through CRS, Catholics in the United States stand in solidarity with our brothers and sisters around the world, regardless of creed or ethnicity, helping all of God’s family benefit from the fruits of the earth.

*+Paul S. Coakley*

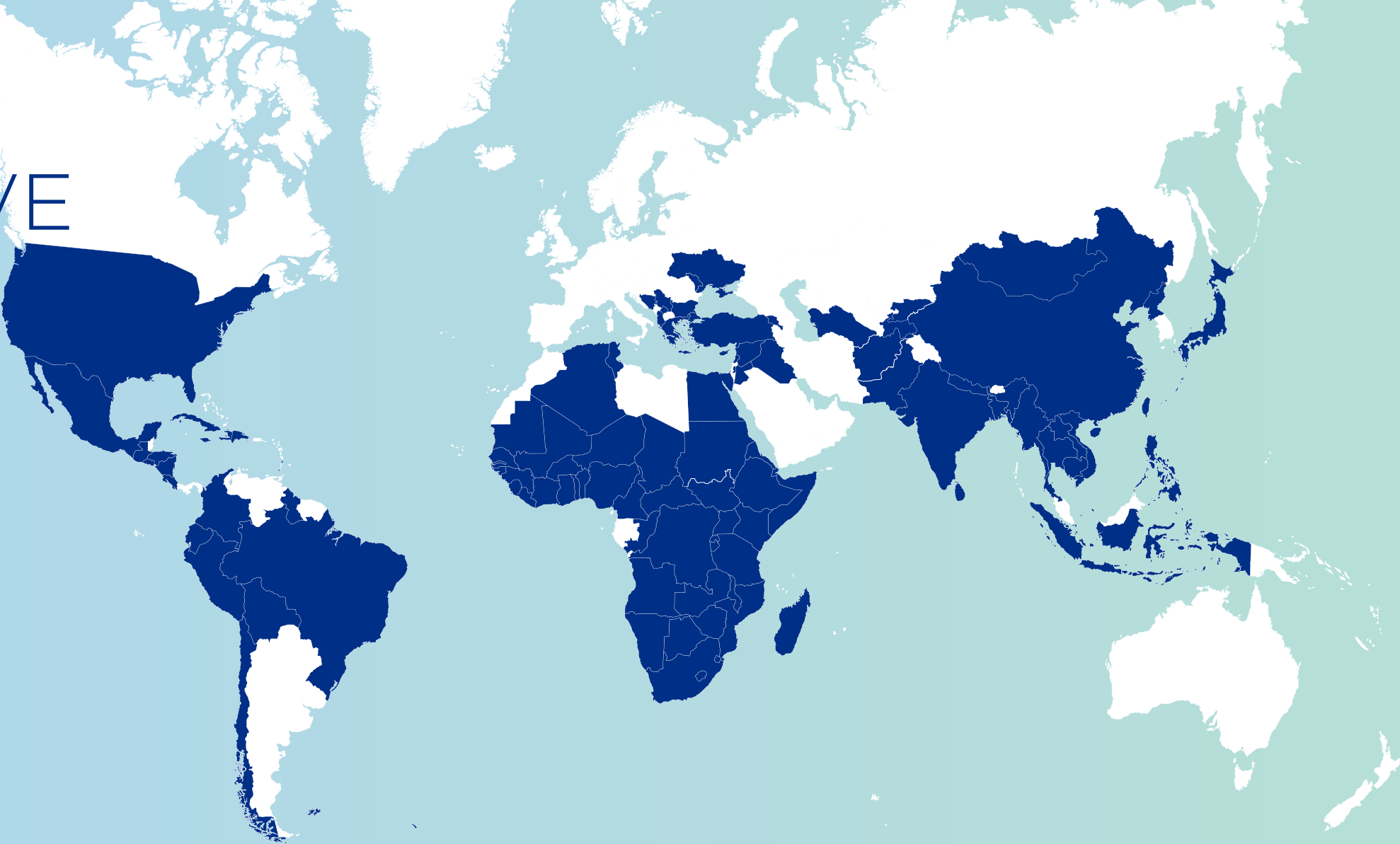
**MOST REVEREND PAUL S. COAKLEY**  
*Archbishop of Oklahoma City  
Chairman, CRS Board of Directors*



# WHERE WE SERVE

## CROSSING BOUNDARIES IN 101 COUNTRIES

As the official international Catholic relief and development agency of the United States Conference of Catholic Bishops, Catholic Relief Services draws upon a rich tradition of Scripture and Catholic social teaching, which serve as the foundation for our Guiding Principles. Acting as a guide to what a just world might look like, these principles are shared across religious and cultural boundaries, and articulate values that are common among people who seek to promote and work toward true justice and lasting peace.



### LATIN AMERICA & CARIBBEAN

- Bolivia
- Brazil
- Colombia
- Costa Rica
- Cuba
- Dominican Republic
- Ecuador
- El Salvador
- Grenada
- Guatemala
- Guyana
- Haiti
- Honduras
- Jamaica
- Mexico
- Nicaragua
- Peru
- St. Lucia

### AFRICA

- Angola
- Benin
- Botswana
- Burkina Faso
- Burundi
- Cameroon
- Central African Republic
- Chad
- Democratic Republic of Congo
- Djibouti
- Eritrea
- Ethiopia
- The Gambia
- Ghana
- Guinea
- Guinea-Bissau
- Ivory Coast
- Kenya
- Lesotho
- Liberia
- Madagascar
- Malawi
- Mali
- Mauritania
- Mozambique
- Namibia
- Niger
- Nigeria
- Republic of the Congo
- Rwanda
- Senegal
- Sierra Leone
- Somalia
- South Africa
- South Sudan
- Sudan
- Swaziland
- Tanzania
- Togo
- Uganda
- Zambia
- Zimbabwe

### EUROPE, MIDDLE EAST & CENTRAL ASIA

- Afghanistan
- Albania
- Algeria
- Armenia
- Bosnia and Herzegovina
- Bulgaria
- Cyprus
- Egypt
- Greece
- Iraq
- Jersusalem, West Bank and Gaza
- Jordan
- Kosovo
- Kyrgyzstan
- Lebanon
- Moldova
- Pakistan
- Serbia
- Syria
- Tajikistan
- Tunisia
- Turkey
- Turkmenistan
- Ukraine

### EAST & SOUTH ASIA

- Bangladesh
- Cambodia
- China
- East Timor
- India
- Indonesia
- Japan
- Laos
- Mongolia
- Myanmar
- Nepal
- North Korea
- Oceania
- Philippines
- Sri Lanka
- Thailand
- Vietnam

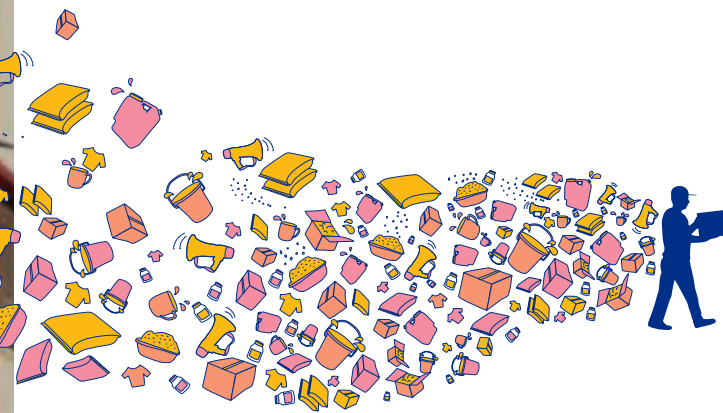




A cash-for-work project in Gaza employs people to help rebuild and restore community structures.  
Photo by Shareef Sarhan for CRS



## EMERGENCY RESPONSE & RECOVERY



# GO NOW

*For everyone who asks, receives; and the one who seeks, finds;  
and to the one who knocks, the door will be opened.*

MATTHEW 7:8

### HELPING THOSE IN URGENT NEED

When emergency strikes, the time to act is now. The world's poorest communities are also the most vulnerable. A rapid, coordinated response is essential to saving lives, jump-starting recovery and restoring human dignity.

### FROM RECOVERY TO RESILIENCE

In 2014, Catholic Relief Services was called to the frontlines of emergencies in 48 countries. We responded to diverse, complex crises—including the violent conflict in South Sudan, the deadly spread of Ebola in West Africa and the ongoing recovery following Typhoon Haiyan in the Philippines—and reached more than 8.7 million people.

Our approach to emergency relief saves lives by meeting immediate basic needs such as food, hygiene and shelter. But it doesn't stop there. With a large, experienced network of staff and regional Church partners, we remain long after the world's attention has shifted elsewhere, helping people with the difficult task of rebuilding their lives. We also focus on long-term strategies that build resilience and make communities less vulnerable in future crises.

### EMERGENCY RESPONSE & RECOVERY AT A GLANCE

## 8.7 million

BENEFICIARIES

## 204

PROJECTS

## 48

COUNTRIES

faith. action. results.



## DRIVEN FROM HOME

Answering the call to go is never more urgent, or more challenging, than when disasters are fueled by violence. War and political conflict dominated the world news in 2014. Thousands lost their lives. Millions lost their family members, their homes or their livelihoods—or all of these at once.

Through the compassion of our donors, and the courage of our staff and partners, CRS was able to meet basic human needs for war refugees and violence-affected communities, while preserving human rights and respecting human dignity. We will remain long after the headlines disappear, to support long-term recovery and resilience.

In **NORTHERN IRAQ**, more than 1.8 million people have fled violence and religious persecution by the militant group ISIS. Christians, Yazidis and Shia Muslims have been singled out for attack. Many are living in empty houses, schools, church compounds and abandoned buildings. We are working with Caritas Iraq and local authorities to provide shelter and essential household items to newly displaced families. We're also providing counseling, education and other services to children affected by the ongoing conflict.



### POPE FRANCIS TWEETS CRS PHOTO

On September 5, 2014, Pope Francis tweeted his first photo—from CRS in Iraq. The image went to the Pope's 4.45 million Twitter followers, calling attention to the plight of vulnerable refugees, especially children. It was retweeted 9,402 times.

*Photo by Hawre Khalid/Metrography for CRS*



## EMERGENCY RESPONSE & RECOVERY

In **GAZA**, entire neighborhoods were demolished by violence last year, and hundreds of thousands of people are still living without basic electricity or access to clean water. CRS is providing emergency humanitarian relief to families as they start to pick up the pieces. CRS and the United States Conference of Catholic Bishops organized a delegation of 20 U.S. bishops to visit the Holy Land in December 2014 to pray for peace and explore challenges to—and opportunities for—resolving the conflict.

Largely out of the global spotlight, the situation in **CENTRAL AFRICAN REPUBLIC** continued to deteriorate. With repeated violent clashes and armed groups wreaking vengeance on unarmed people, at least 20 percent of the population is displaced within the country or seeking refuge in neighboring countries. Whole towns and villages were systemically looted. CRS teams and partners continue to provide emergency relief such as household supplies, emergency shelter, and seeds and tools, while empowering individuals and communities to come together to rebuild livelihoods.



### PLAYING FOR PEACE

Hundreds of Syrian children attended a summer camp hosted by CRS in Bekaa Valley, Lebanon, thanks to the generosity of CRS donors. The camp provided recreational activities, counseling and a healing refuge for some of the many children who lost homes and loved ones in the country's civil war. More than 7 million people inside Syria are displaced. CRS and our partners have assisted 350,000 with humanitarian assistance, counseling and education.

*Photo by Rashad Sisemore for CRS*

*"We heard the threat from ISIS. I ran and left all the things behind. I just came with my legs. We never expected this. When we arrived, the priest told us, 'Welcome, welcome. You have no worries here.'"*

**SALAH ADEL AYOB**, at a CRS distribution center in Mangesh



faith. action. results.





A woman in Guinea washes her hands at a public hand-washing station provided by CRS and our local Caritas partner.

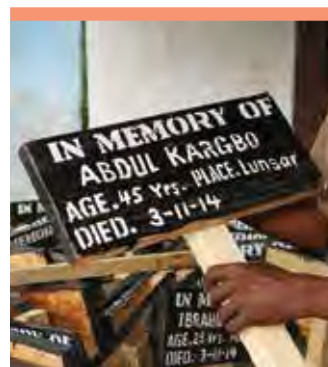
Photo courtesy of Organisation Catholique pour la Promotion Humaine

## EBOLA VIRUS IN WEST AFRICA

In March 2014, the West African country of Guinea experienced its first confirmed case of Ebola. Since then, more than 24,000 people have contracted the virus, according to the World Health Organization, making this the biggest outbreak on record. More than 10,000 people have died of the hemorrhagic fever caused by Ebola.

### HELPING FAMILIES COPE

Ebola spreads for a number of reasons, including lack of understanding in local communities about how Ebola is contracted. Working with our partners, CRS is training thousands of health care workers in infection control. We're also distributing hygiene materials, and communicating prevention and treatment messages. In addition, we're helping families cope with loss of income and the impact of increased food prices because of the crisis. We are distributing food to orphans, widows, discharged patients and other vulnerable groups, and have reached more than 120,000 people.



### BURIED WITH DIGNITY

Washing bodies of the deceased is an important part of West African cultures, but it can expose family members to infectious bodily fluids. In Sierra Leone, CRS is helping to manage thousands of safe and dignified burials in three districts to prevent further infections while respecting families' religious practices.

Photo by Donal Reilly for CRS



## EMERGENCY RESPONSE & RECOVERY

## SUPER TYPHOON HAIYAN

In late 2013, Super Typhoon Haiyan slammed into the Philippines, leaving more than 6,000 dead and 1 million homes damaged or destroyed. Working in partnership with the Catholic Church in the Philippines, CRS responded immediately, bringing lifesaving assistance to areas damaged by the storm.

By January we were helping people rebuild their homes with more resilient designs and materials, protecting them against future flooding. We provided 200,000 people with emergency shelter, clean water and sanitation in 2014, and helped 9,000 farm families get back to work.

### FLEXIBLE SOLUTIONS

Recovery from Haiyan will take years. It will also take flexibility and creativity, as the people of the Philippines work to rebuild and re-envision their future.

CRS has developed a 5-year plan designed to help 500,000 people recover over time. There is no one-size-fits-all solution. As we focus on long-term recovery, we're training and supplying carpenters with tools to build homes using more durable, disaster-resistant materials. We're also offering training in agricultural production and marketing for people who want to resume or begin farming.

With a menu of options for shelter, resettlement and restoring livelihoods, CRS is making choice a powerful tool for change.

CRS engineers provide design and material solutions to meet needs in different locations. Homes in low-lying areas, for example, need raised foundations to avoid periodic flooding.

Photo by Jennifer Hardy/CRS







AGRICULTURE

# GO HARVEST

*Blessed are you who are now hungry,  
for you will be satisfied.*

LUKE 6:21

## GROWING OPPORTUNITY

Everywhere we go, we see a world full of opportunity and bounty. Yet for the poor and vulnerable, simple blessings are often out of reach. Clean water. Arable land. Basic financial skills. Enough food to feed every family member, every day.

A harvest that yields food and income is the key to fighting poverty and hunger in much of the developing world. Hunger has long-term consequences on a person's health, development and ability to earn a living. Small-scale farmers in countries like Kenya, Tanzania and Nicaragua struggle with drought, floods, degraded soil and low-quality seeds, and often rely on outdated farming methods. Meanwhile their families go hungry, and the cycle of poverty and poor health continues.

## PATHWAY TO PROSPERITY

Catholic Relief Services develops agricultural programs that help communities rebound when disaster strikes and build their long-term resilience. We start by providing the building blocks of a better harvest—better seeds and farming techniques, new skills in marketing and business, improved infrastructure and conservation techniques. Then we help farmers build the core skills they need to save, diversify, invest in their farms, bring their goods to market and, eventually, increase sales by connecting to private-sector businesses.

## AGRICULTURE AT A GLANCE

**6.6 million**

BENEFICIARIES

**191**

PROJECTS

**45**

COUNTRIES

*A young farmer harvests yams in the village of Barangoni, Nigeria. Volunteers trained by CRS are helping farmers improve planting and harvesting techniques to increase their yields.*

*Photo by David Snyder for CRS*

**faith. action. results.**





Carlos Roberto Flores is replacing his family's wooden shack with a concrete rancher while he builds up his small farm in Nicaragua with help from CRS.

Photo by Robyn Fieser/CRS

## PROGRESA

Like many small-scale farmers in Nicaragua, Carlos Roberto Flores relies on pasture to feed his cattle. But in the dry summer months, when pasture and water are scarce, his cattle lose half the weight they gained during the rainy season. This means less milk to feed his family, and no surplus to sell at the local market.

### WORKING HARD TO GROW AND PROSPER

"It's all about food," says Flores, who once risked his life to migrate to the United States on a notorious "train of death," and is now working hard to help his family grow and prosper in Nicaragua.

A better life for Flores depends on better feed for his cattle. Through the U.S. Department of Agriculture-funded Program for Rural Enterprise Management, Health and the Environment, or PROGRESA, CRS is helping Flores and others improve their pastures. Farmers are using more resilient grass varieties, improving livestock nutrition with supplemental mineral salts, and storing feed for the dry summer months.

In its first 2 years, PROGRESA helped increase—by 31 percent—some 2,800 farmers' earnings from cattle. Reproduction rates for cattle are up too. Fifty-eight percent of dairy cattle owned by farmers in the program reproduce, compared with 46 percent of cattle owned by farmers that are not in the program.

## FARMER TO FARMER

*"The group members are poor, illiterate and lacking in business skills ... They required help with their day-to-day business, but also needed a business plan to provide a road map."*

### DONNA ROSA

Donna Rosa recently attended some business meetings in an unusual spot: under a towering fig tree, with occasional visits from cows, goats, chickens and baboons.

Rosa was on assignment in Kibwezi, Kenya, volunteering with CRS as part of USAID's Farmer-to-Farmer Program. The program sends U.S. volunteers to developing countries to work with farmers on increasing food production, incomes and economic opportunity.

### A PLAN FOR FUTURE GROWTH

Rosa spent 3 weeks in Kibwezi helping an enterprising women's community group learn how to better manage its milling business and retail store. She provided recommendations on marketing, value-added services and financing.



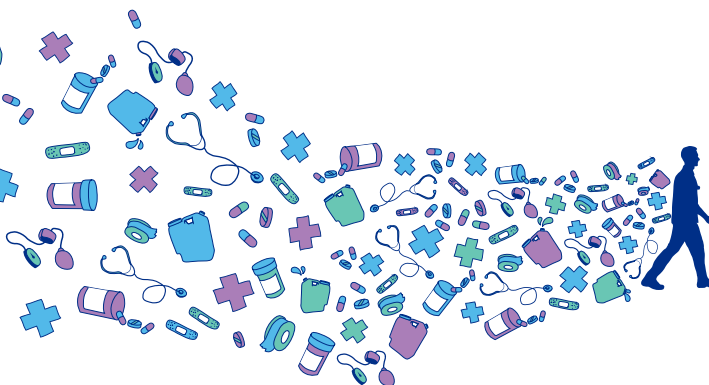
With support from Donna Rosa, CRS and USAID, the Huruma Women's Group is working to become a certified food processing plant and is planning for future growth.

Photo by Donna Rosa for CRS



Mekya Ganemo began receiving a porridge of fortified corn and soy early in her pregnancy from CRS through funding from USAID.

Photo by Sara A. Fajardo/CRS



# GO HEAL

*Come to me, all you who labor and are burdened,  
and I will give you rest.*

MATTHEW 11:28-29

## MAKING A VITAL DIFFERENCE

Catholic Relief Services goes where others don't—to remote places with little or no access to doctors, clinics or hospitals. We work with local partners to tailor health solutions that fit the long-term needs of each community. Our programs save lives and build stronger societies, one healthy family at a time.

## BEGINNING WITH BETTER HEALTH

Our child health programs focus on the first 5 years of life to put an end to preventable deaths of newborns and their mothers. We monitor infant growth and support quality care through early childhood development programs, immunizations, and maternal and newborn care.

Good nutrition is a critical building block of good health. CRS engages communities, families and providers to address underlying causes of malnutrition, and to detect and treat it when it occurs.

Networks of faith-based organizations, community associations and academia play a crucial role in strengthening health systems and delivering immunization services in some of the world's poorest regions. CRS has been working in partnership with Gavi, formerly the Global Alliance for Vaccination and Immunization, since 2011 to support these networks in 23 regions.

faith. action. results.

## HEALTH AT A GLANCE

**58 million**

BENEFICIARIES

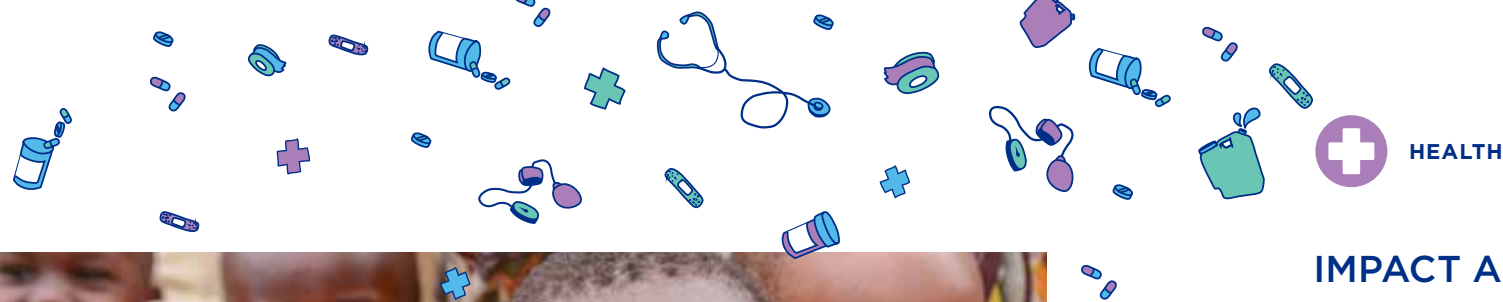
**134**

PROJECTS

**43**

COUNTRIES





Parents learn how to make toys from local, inexpensive materials and play one-on-one with their children as part of the THRIVE project.

Photo by Philip Laubner/CRS

## THRIVE

Children living in poverty often struggle to thrive for many reasons, including poor nutrition and lack of education. HIV increases the odds that children won't meet their full potential.

The THRIVE early childhood development project helps level the playing field for children affected by HIV. THRIVE enables parents and caregivers to provide safe and stimulating physical environments so children can reach their physical, emotional and intellectual potential. From 2012 to 2015, this 3-year project, funded by the Conrad N. Hilton Foundation, is providing 17,879 children under age 5 in Kenya, Malawi and Tanzania with a sustainable culture of care and support.

### JUST LIKE ME

Playing games. Making friends. Learning new things. No matter where they live or what hurdles they must overcome, kids are just kids.

CRS developed the **JUST LIKE ME: MEMORY GAME** to help children recognize the many similarities they share with other children around the world, and express their thoughts and feelings with their caregivers and friends.

Donors who supported CRS THRIVE and other programs for orphans and vulnerable children in 2014 received this colorful, engaging game—perfect for families, schools and church groups—as a gift.



## IMPACT AND WALA

*“The most valuable part of [this program] has been the knowledge and skills imparted to me. Even if the program leaves, I can still use this knowledge.”*

**JUDITH DZINGA,**

*program participant and HIV support group leader*

More than 60,000 orphans and vulnerable children and more than 60,000 eligible adults have become healthier and more resilient thanks to the Integrated (HIV Effect) Mitigation and Positive Action for Community Transformation (IMPACT) program, a CRS-led program funded by USAID in Malawi. IMPACT and its companion program, Wellness and Agriculture for Life Advancement, or WALA, were designed to complement each other, taking a holistic approach to decreasing food insecurity and mitigating the impact of HIV and AIDS. Together, the programs changed people's lives by improving access to services such as HIV testing and counseling, HIV treatment adherence, health care, education and child protection. Together, IMPACT and WALA worked with communities to strengthen livelihoods, improve hygiene and sanitation, and teach people how to grow and prepare nutritious foods.

*Sarah Gavinala was diagnosed with HIV when she and her husband, Witinesi, were expecting their youngest son, Bashil. She received support and counseling from the CRS-led IMPACT project.*

Photo by Sara A. Fajardo/CRS





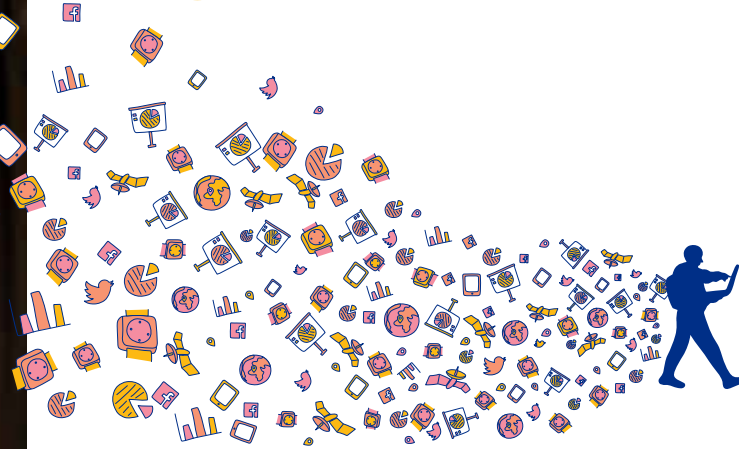


Sunita Devi, right, a community health worker for a CRS-supported program in Uttar Pradesh, India, counsels Sanchita on maternal health and wellness using a CRS mobile app that tracks her clients' pregnancies, and provides health information through pregnancy and after delivery.

Photo by Jennifer Hardy/CRS



INNOVATION



# GO CREATE

*Actions speak louder than words;  
let your words teach and your actions speak.*

SAINT ANTHONY OF PADUA



## TEXTING FOR TESTING

In Nigeria, texting is turning things around for newborns who need regular HIV testing. CRS health workers are using cell phone messaging to remind HIV-positive mothers to bring their babies to health facilities for early diagnosis. Between January and June 2014, before the messaging was introduced, only five babies were tested. After texting began, between July and September, 146 were tested.

Photo by David Snyder for CRS

## TOOLS FOR A BETTER TOMORROW

Information and communications technology for development, or ICT4D, includes mobile devices and other tools that help us meet local needs, collaborate and make meaningful changes to the way we work. It helps reduce costs, data collection errors and the amount of time needed to provide help during emergencies.

## NET GAIN

Ninety percent of all malaria deaths occur in Africa, mostly among children under 5 years old. One of the keys to preventing these deaths is encouraging parents to use insecticide-treated mosquito netting. In the Gambia, CRS staff used iPads equipped with software to help track distribution of nearly a million bed nets and collect data on results.

## STAYING IN TOUCH

In 2014, Catholic Relief Services created eValueate, a digital monitoring and evaluation system that makes it easy and seamless for multiple users to collect, analyze and share data. A technology solution with a human touch, ICT4D is helping us better serve people in refugee camps, on remote farms and in rural health clinics.



faith. action. results.





In Uganda, South Sudanese women trained as hygiene promoters carry supplies for distribution to fellow refugees.

Photo by Ric Francis for CRS



PEACEBUILDING

# GO IN PEACE

*We have on our side tools  
more powerful than any weapons.*

CARDINAL OSCAR RODRIGUEZ MARADIAGA, *President, Caritas Internationalis*

## SUPPORTING SOUTH SUDAN

After decades of civil war in Sudan, Catholic Relief Services worked with tribal leaders, Church leaders and community members to help bring peace and independence to South Sudan. Today this new country is struggling, as political tensions and fragile interethnic relationships lead once again to large-scale fighting and displacement. Together with our local partners, we are working to strengthen these relationships and promote healing, while continuing to deliver lifesaving emergency and development assistance.

## CONNECTING COMMUNITIES IN CENTRAL AFRICAN REPUBLIC

The fighting in Central African Republic has divided communities that had lived together peacefully. CRS is supporting the work of religious leaders to heal divisions and prevent further violence. In November 2014, CRS hosted Catholic Archbishop Dieudonné Nzapalainga of Bangui, national Muslim leader Imam Oumar Kobine Layama and national Evangelical leader Pastor Nicolas Guerékoyame Gbangou. They were in Washington, DC, to discuss the current conflict and potential solutions with U.S. officials and members of the international community.

Working with Search for Common Ground and Caritas partners, CRS developed the USAID-funded Empowered Connected Communities program, a community-based approach to rebuilding the social fabric in southeastern Central African Republic. Following the violent breakdown in interfaith relations in December 2013, CRS received additional funding to expand the program to Bossangoa and Bouar.

## PEACEBUILDING AT A GLANCE

**3.4 million**

BENEFICIARIES

**103**

PROJECTS

**44**

COUNTRIES

faith. action. results.





Edgar Mendoza was one of 52,449 children in Honduras who had access to school meals that help improve learning, thanks to CRS and our local partners working with USDA's Food for Education program.

Photo by Christian Meléndez-López/CRS



EDUCATION



# GO LEARN

*Darkness cannot drive out darkness;  
only light can do that.*

DR. MARTIN LUTHER KING JR.

## STRONG BODIES, STRONG MINDS

Edgar Mendoza and Elmer Pineda are best friends who share a love of mathematics. A simple equation helped them graduate from elementary school: daily meals plus running water equals a better education.

The boys attended Justo P. Henríquez Primary School in Honduras, one of 1,047 schools where Catholic Relief Services and local authorities implemented the \$17.7 million Food for Education program, with funding from the U.S. Department of Agriculture.

As part of their day, students at Justo P. Henríquez receive a “merienda,” or light midday meal, that in some cases is half of the child’s total daily nutrition. Better nutrition improves literacy, attendance and retention.

The school has a kitchen as well as new, community-built latrines—one for boys and one for girls. Local citizens also worked with CRS and the municipal government to construct a water and sanitation system that not only benefited the school, but also helped families get running water in their homes.

## EDUCATION AT A GLANCE

**3.5 million**

BENEFICIARIES

**80**

PROJECTS

**35**

COUNTRIES





Father Adelino offers Holy Communion to pilgrims during a Mass celebrating the Virgin Mary in the town of Boda, Central African Republic.

Photo by Sam Phelps for CRS



GLOBAL CHURCH ENGAGEMENT



# GO TOGETHER

*I can do things you cannot, you can do things I cannot;  
together we can do great things.*

BLESSED TERESA OF CALCUTTA



Sister Bernadette Ouedraogo grows bananas to help provide food and income for vulnerable children in Burkina Faso with support from CRS and Caritas programs.

Photo by Michele Gilfillan for CRS

## FAITH IN CHANGE

Partnership is fundamental to how Catholic Relief Services goes out in the world. We profoundly believe that change occurs through our Catholic Church and other local partners—that by sustaining and strengthening local institutions we enhance a community's ability to resolve its own problems. We work with 164 member organizations of Caritas Internationalis in a global confederation dedicated to improving the lives of poor people.

## SHARING KNOWLEDGE

Grounded in Catholic social teaching, integral human development, or IHD, is a central component of the CRS agency strategy and the work we do with our partners. The framework considers how all aspects of life—cultural, economic, political, social and spiritual—contribute to a person's health and well-being.

In May 2014, Cardinal Ouedraogo and 20 bishops from Burkina Faso and Niger attended an IHD training session at their annual Episcopal conference. The experience provided an opportunity for the bishops to learn how they can apply IHD in their dioceses. The Catholic Church in Burkina Faso has adopted the CRS-designed IHD conceptual framework as a tool for development.





Students at St. Francis of Assisi Catholic school in Baltimore, Maryland, participate in CRS Rice Bowl.

Photo by Philip Laubner for CRS



US OPERATIONS



# GO IN SPIRIT

*Pray as though everything depended on God.  
Work as though everything depended on you.*

SAINT AUGUSTINE

## TAKING ACTION

Our impact overseas is made possible by the Catholic community's actions here at home. To learn more about the plight of the world's poor and how to make a difference, CRS supporters in dioceses, parishes, schools and communities throughout the United States are participating in our programs. These include CRS Rice Bowl, CRS Fair Trade, Helping Hands and the CRS-United States Conference of Catholic Bishops initiative Catholics Confront Global Poverty.

## CRS RICE BOWL GOES MOBILE

Forty years ago, Catholic Relief Services started CRS Rice Bowl in response to famine in Africa. Since then, U.S. dioceses, parishes and schools have used the program to put their faith into action through Lenten prayer, fasting and almsgiving—raising more than \$250 million to feed the hungry.



Today there's a new way to experience Lent: the CRS Rice Bowl App. Mobile users receive daily reflections and simple meal recipes, videos and a virtual rice bowl so they can record their Lenten sacrifices. Money raised from CRS Rice Bowl supports CRS humanitarian programs around the world, as well as efforts to help the poor in the United States.



## ADVOCACY IN ACTION

Catholics Confront Global Poverty mobilized to advance key priorities in the Farm Bill, including a provision that allows the purchase of food from local farmers to meet the needs of people nearby—a change that saves time and supports local economies.

Photo by Ric Francis for CRS

faith. action. results.





CRS has provided goats for milk, meat and fertilizer to widows like Esperance Kankundiye, a mother of two who lives in Nyamugaki Village in central Rwanda.

Photo by Helen Blakesley for CRS

# JOURNEY OF HOPE

LISA M. HENDEY



*Lisa M. Hendey is founder of CatholicMom.com and author of **The Grace of Yes**. She employs television, radio, social media and her writing to share her passion for the New Evangelization. Lisa speaks internationally on faith, family and technology, and resides in the Diocese of Fresno with her husband, Greg.*

*Lisa was selected as a Catholic Relief Services Egan Journalism Fellow, and traveled with CRS in Rwanda to study and write about the lingering effects of the Rwandan genocide 20 years later.*

Traveling to Rwanda, I learned many important life lessons I could have never learned in the United States. One of them was the life-changing impact of forgiveness.

One day, we took a long drive out of the Kigali city center and into the countryside. In an open field surrounded by goats, we met with members of the Karonyi Women's Genocide Survivor Community. It was clear to me that these widows—who lost their spouses, and in some cases, their children, to the terrors of the Rwandan genocide 20 years ago—have forged a bond that has allowed them to not only survive horrific loss and grief, but to also become a family to one another.

Somehow, through programs facilitated by CRS and the local Church, these matriarchs and other genocide survivors had found a way to forgive those who committed unimaginable crimes against them. I believe the current peace in Rwanda can be directly attributed to the efforts of Catholic Relief Services and the Church in that region.

When I applied for CRS' Egan Journalism Fellowship, my hope was that traveling with CRS to Rwanda would enable me to more effectively communicate the organization's mission and vision to our readership at CatholicMom.com. I could never have

anticipated how greatly our trip to Rwanda would impact both my profound respect for CRS and my own life. Our journey to study the organization's work on the eve of the 20<sup>th</sup> anniversary of the Rwandan genocide brought keen new insights for me. I saw CRS staff members' commitment to professionalism, to humanitarian care and to the teachings of the Catholic Church.

Another lasting impression was the reminder that our donations to CRS, modest though they may sometimes be, can have a profound and lasting impact. The widows were quick to thank us for the goats that CRS had given to their community. I learned that the price of dinner out for a family of four in the United States can be a lifeline to people living on the edge of devastation.

Since returning from Rwanda, I have redoubled my support for CRS and the trip intensified my personal commitment to serving the poor in my community and worldwide. I have given countless speeches around the country about my "Life Lessons From Rwanda." I devoted a chapter in my new book, "The Grace of Yes," to the impact of our trip on my perception of the virtue of humility and true reconciliation.



# 2014 FINANCIAL SUMMARY

Catholic Relief Services ensures that the funds you have so generously entrusted to us go where they are needed most. In the interest of stewardship, only summary financial information is provided in the annual report.

For complete financial statements, including auditor's notes, please visit [crs.org/about/finance/pdf/2014-financials.pdf](http://crs.org/about/finance/pdf/2014-financials.pdf) or call 888-277-7575.

## STATEMENT OF ACTIVITIES (in thousands)

OPERATING REVENUE	2014	2013
	Total Funds	Total Funds
Private Support	\$256,545	\$175,957
Public Support	423,886	427,969
Investment and Other Income	3,364	2,080
<b>TOTAL</b>	<b>\$683,795</b>	<b>\$606,006</b>
<b>OPERATING EXPENSES</b>		
Program Services	\$599,279	\$584,773
Supporting Services	52,017	47,753
<b>TOTAL</b>	<b>\$651,296</b>	<b>\$632,526</b>
<b>CHANGE IN NET ASSETS FROM OPERATIONS</b>	<b>\$32,499</b>	<b>\$(26,520)</b>
<b>NON-OPERATING REVENUE (AND EXPENSES)</b>	<b>\$9,186</b>	<b>\$47,096</b>
<b>CHANGE IN NET ASSETS</b>	<b>\$41,685</b>	<b>\$20,576</b>
Net assets, beginning of period	\$184,248	\$163,672
Net assets, end of period	\$225,933	\$184,248

## REVENUE (in thousands)

### PRIVATE SUPPORT

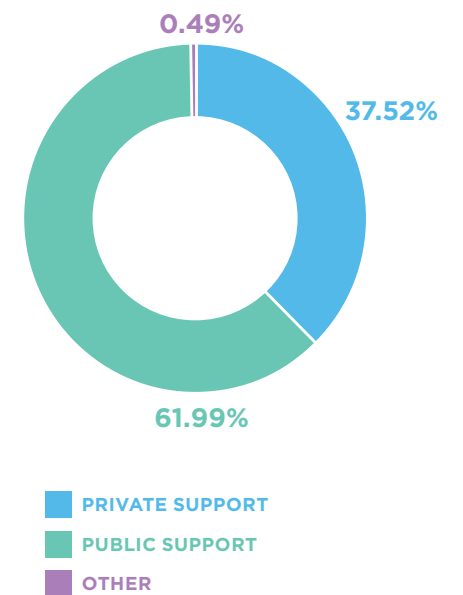
CRS Collection	\$14,621	2.14%
CRS Rice Bowl	7,922	1.16%
Other Private Contributions	169,387	24.77%
Foundation and Other Private Grants	40,196	5.88%
Bequests	21,599	3.16%
Private In-kind Gifts	2,820	0.41%
<b>TOTAL</b>	<b>\$256,545</b>	<b>37.52%</b>

### PUBLIC SUPPORT

Commodities and Freight	\$102,027	14.92%
U.S. Government Grants	226,179	33.08%
Other Public Grants and Contributions	83,706	12.24%
Public In-kind Gifts	11,974	1.75%
<b>TOTAL</b>	<b>\$423,886</b>	<b>61.99%</b>

### OTHER

Investment and Other Income	\$3,364	0.49%
<b>TOTAL</b>	<b>\$683,795</b>	<b>100%</b>



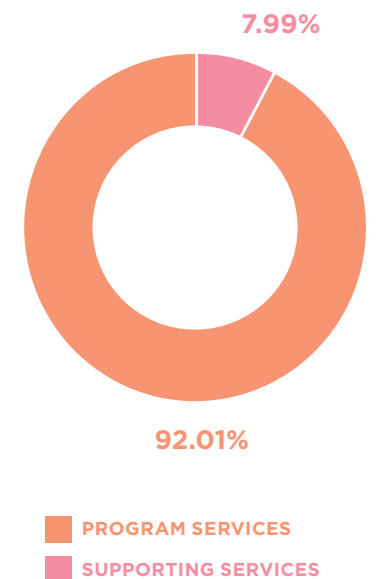
## EXPENSES (in thousands)

### PROGRAM SERVICES

Agriculture	\$146,446	22.48%
Water	14,559	2.24%
Education	57,112	8.77%
Emergency	230,112	35.33%
Small Enterprise	5,525	0.85%
Health	68,882	10.58%
HIV and AIDS	39,518	6.06%
Peace and Justice	30,797	4.73%
Welfare	6,328	0.97%
<b>TOTAL</b>	<b>\$599,279</b>	<b>92.01%</b>

### SUPPORTING SERVICES

Management and General	\$22,334	3.43%
Public Awareness	8,024	1.23%
Fundraising	21,659	3.33%
<b>TOTAL</b>	<b>\$52,017</b>	<b>7.99%</b>
<b>TOTAL</b>	<b>\$651,296</b>	<b>100%</b>





# OVERSEAS LEADERSHIP

<b>ACR</b>	Acting Country Representative
<b>CM</b>	Country Manager
<b>CR</b>	Country Representative
<b>DRD</b>	Deputy Regional Director
<b>RD</b>	Regional Director
<b>ROM</b>	Regional Outreach Manager



## EAST & SOUTH ASIA

**Regional Director**  
Greg Auberry

**Bangladesh**

Kathleen Merkel (CM)

**Cambodia, Myanmar, Vietnam**

Sanda Rihtman (CR)

**China, Mongolia, North Korea, Oceania, Sri Lanka, Thailand**

Kathleen Merkel (ROM)

**East Timor**

Ian de la Rosa (CR)

**India, Nepal**

John Shumlansky (CR)

Tony Castleman (CR)

**Indonesia**

Yenni Suryani (CM)

**Japan**

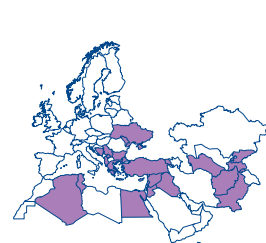
Greg Auberry (RD)

**Laos**

Bernie Chaves (CR)

**Philippines**

Joe Curry (CR)



## EUROPE, THE MIDDLE EAST & CENTRAL ASIA

**Regional Director**  
Kevin Hartigan

**Afghanistan**

William Schmitt (CR)

**Albania, Armenia, Bosnia and Herzegovina, Bulgaria, Greece, Kosovo, Kyrgyzstan, Moldova, Serbia, Tajikistan, Turkmenistan, Ukraine**

Marc D'Silva (CR)

**Algeria, Cyprus, Jordan, Lebanon, Tunisia**

Davide Bernocchi (CR)

**Iraq, Egypt**

Hani El-Mahdi (CR)

**Jerusalem, West Bank and Gaza**

Matthew McGarry (CR)

**Pakistan**

Andrew Schaefer (CR)

**Syria, Turkey**



## LATIN AMERICA & THE CARIBBEAN

**Regional Director**  
Mary Hodem

**Bolivia, Brazil, Colombia, Ecuador, Peru**

Brian Goonan (CR)

Thomas Hollywood (CR)

**Costa Rica, Nicaragua**

Hugh Aprile (CR)

Anne Bousquet (CR)

**Cuba, Dominican Republic, Grenada, Guyana, Jamaica, St. Lucia**

Kellie Hynes (CR)

**El Salvador**

Erica Dahl-Bredine (CR)

**Guatemala, Mexico**

Anne Bousquet (CR)

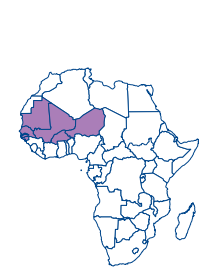
Paul Townsend (CR)

**Haiti**

Darren Hercyk (CR)

**Honduras**

Juan Sheenan (CR)



## SAHEL WEST AFRICA

**Regional Director**  
Dorothy Madison-Seck

**Burkina Faso**

Bangre Moussa Dominique (CR)

**Mali**

Sean Gallagher (CR)

Niek de Goeij (CR)

**Niger**

Bill Rastetter (CR)

**Senegal, The Gambia, Guinea-Bissau, Mauritania**

Nicole Poirier (CR)

# OVERSEAS LEADERSHIP

- ACR Acting Country Representative
- CM Country Manager
- CR Country Representative
- DRD Deputy Regional Director
- RD Regional Director
- ROM Regional Outreach Manager



## COASTAL WEST AFRICA

**Regional Director**  
Paul Townsend

**Benin, Togo**

Christophe Droeven (CR)

**Ghana, Ivory Coast**

Lisa Washington-Sow (CR)

**Guinea**

Godlove Ntaw (CR)

**Liberia**

Joanna Olsen (CR)

**Nigeria**

Chris Bessey (CR)

**Sierra Leone**

Michael Ghebrab (CR)



## SOUTHERN AFRICA

**Regional Director**  
Dorrett Byrd

**Angola**

Stephanie French (CR)

Sean Gallagher (CR)

**Botswana, South Africa, Swaziland**

Davor Dakovic (CM)

**Lesotho**

Rita Billingsley (CR)

**Madagascar**

Laura Dills (CR)

**Malawi**

Debbie Shomberg (CR)

**Mozambique, Namibia**

Dorrett Byrd (RD)

**Zambia**

Dane Fredenburg (CR)

**Zimbabwe**

Timothy Bishop (CR)

Pulickal Mathai Jose (CR)



## CENTRAL AFRICA

**Regional Director**  
Scott Campbell

**Burundi**

Darren Posey (CR)

**Cameroon**

Lori Kunze (CR)

**Central African Republic**

Renée Lambert (CM)

LeAnn Hager (CR)

**Chad**

Sylvain Duhau (CM)

Lori Kunze (CR)

**Democratic Republic of the Congo, Republic of the Congo**

Margarett Desilier (CR)

Timothy Bishop (CR)

**Rwanda**

LeAnn Hager (CR)

Marie-Noëlle Senyana-Mottier (CM)

Darren Posey (CR)



## EAST AFRICA

**Regional Director**  
David Orth-Moore

**Djibouti, Eritrea**

David Orth-Moore (RD)

**Ethiopia**

Matt Davis (CR)

**Kenya**

Pulickal Mathai Jose (CR)

Lane Bunkers (CR)

**Somalia**

Malone Miller (CM)

Jennifer Overton (DRD)

Lane Bunkers (CR)

**South Sudan**

Lorraine Bramwell (CR)

**Sudan**

Carolyn Fanelli (CR)

Thomas Hollywood (ACR)

**Tanzania**

Conor Walsh (CR)

**Uganda**

Elizabeth Pfifer (CM)

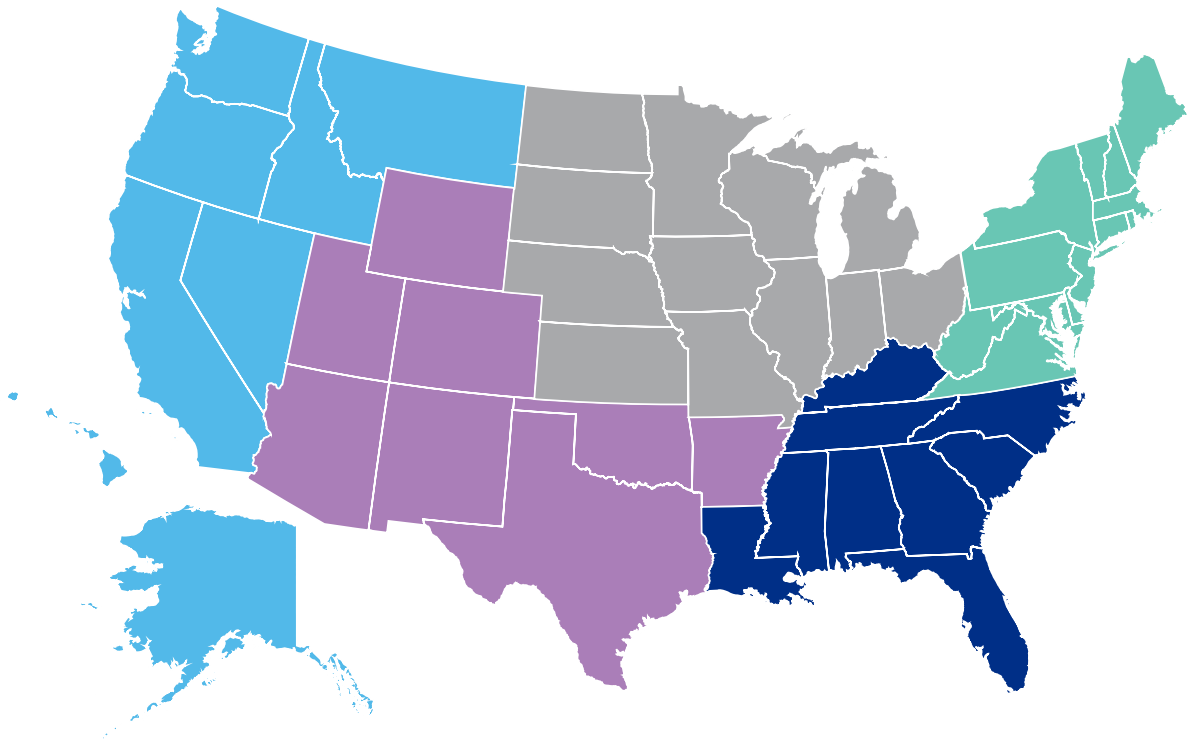


# U.S. OPERATIONS

## REGIONAL OFFICES

The role of Catholic Relief Services’ five domestic regional offices is to inform Catholics in the United States about global solidarity and engage them in living out their faith with their brothers and sisters in need around the world through involvement in CRS programs and advocacy.

Regional staff members work with dioceses, parishes, Catholic schools, universities, faith-based groups and religious communities. They also collaborate with the CRS Charitable Giving and Overseas Operations divisions to provide resources and opportunities for Catholics in the United States to pray, learn, act and give.



### WEST

**Regional Director**  
James DeHarpporte  
*San Diego, California*

- Alaska
- California
- Hawaii
- Idaho
- Montana
- Nevada
- Oregon
- Washington

### SOUTHWEST

**Regional Director**  
Roberto Navarro  
*San Antonio, Texas*

- Arizona
- Arkansas
- Colorado
- New Mexico
- Oklahoma
- Texas
- Utah
- Wyoming

### MIDWEST

**Regional Director**  
Madeleine Philbin  
*Chicago, Illinois*

- Illinois
- Indiana
- Iowa
- Kansas
- Michigan
- Minnesota
- Missouri
- Nebraska
- North Dakota
- Ohio
- South Dakota
- Wisconsin

### NORTHEAST/ MID-ATLANTIC

**Regional Director**  
Maureen McCullough, JD  
*Philadelphia, Pennsylvania*

- Connecticut
- Delaware
- Maine
- Maryland
- Massachusetts
- New Hampshire
- New Jersey
- New York
- Pennsylvania
- Rhode Island
- Vermont
- Virginia
- Washington, DC
- West Virginia

### SOUTHEAST

**Regional Director:**  
Cullen Larson  
*Atlanta, Georgia*

- Alabama
- Florida
- Georgia
- Kentucky
- Louisiana
- Mississippi
- North Carolina
- South Carolina
- Tennessee
- U.S. Virgin Islands



# DIOCESAN DIRECTORS

Catholic Relief Services extends its thanks to our Diocesan Directors for helping Catholics in the United States live out their faith in solidarity with those in greatest need around the world. Your compassion and commitment make it possible for CRS to advance the Church's global mission and vision, to advocate on international issues, and to provide updates on our activities to U.S. archdioceses and dioceses.

Diocesan Directors educate Catholics about Catholic social teaching, social justice and CRS' efforts overseas on behalf of the Church in the United States. Their understanding of our work helps to engage the faithful in international concerns through programs such as CRS Rice Bowl, Food Fast and Fair Trade, through global partnerships and in outreach to young people, including college students on campuses around the country.

## ALABAMA

**Archdiocese of Mobile**  
Deacon Walt Crimmins

**Diocese of Birmingham**  
Rev. Richard Donohoe  
Mrs. Jane Sweeney  
Ms. Edna Townes

## ALASKA

**Archdiocese of Anchorage**  
Ms. Bonnie J. Cler

**Diocese of Fairbanks**  
Deacon George Bowder

**Diocese of Juneau**  
Deacon Charles Rohrbacher

## ARIZONA

**Diocese of Phoenix**  
Dr. Maria Chavira

**Diocese of Tucson**  
Sr. Leonette Kochan

## ARKANSAS

**Diocese of Little Rock**  
Mr. Patrick Gallaher  
Mrs. Rebecca Cargile

## CALIFORNIA

**Archdiocese of Los Angeles**  
Bishop Alexander Salazar  
Mr. Jaime Huerta

**Archdiocese of San Francisco**  
Ms. Carolina Parrales  
Mr. George Wesolek

**Diocese of Fresno**  
Msgr. Raymond C. Dreiling

**Diocese of Monterey**  
Ms. Sheilah Lynch  
Ms. Tish Scargill

## Diocese of Oakland

Mr. Marc McKimney

## Diocese of Orange

Ms. Shirl Giacomi

## Diocese of Sacramento

Ms. Cecilia Flores

## Diocese of San Bernardino

Msgr. Tom Wallace

## Diocese of San Diego

Mr. Rodrigo Valdivia

## Diocese of San Jose

Mr. Ruben Solorio  
Ms. Linda Batton

## Diocese of Santa Rosa

Mr. Chuck Fernandez  
Mr. Len Mirabella

## Diocese of Stockton

Ms. Grace Esquivel  
Mr. Richard Fowler

## COLORADO

### Archdiocese of Denver

Mr. Al Hooper

### Diocese of Colorado Springs

Mr. Corey Almond

## CONNECTICUT

### Archdiocese of Hartford

Mrs. Lynn Campbell

### Diocese of Bridgeport

Mr. Al Barber

### Diocese of Norwich

Rev. Msgr. Robert L. Brown

## DELAWARE

### Diocese of Wilmington

Rev. Msgr. George Brubaker

## DISTRICT OF COLUMBIA

### Archdiocese of Washington

Mr. Anthony Bosnick

## FLORIDA

### Archdiocese of Miami

Ms. Rachel Ramjattan  
Rev. Deacon Richard Turcotte

### Diocese of Orlando

Mrs. Stephanie Bosse  
Mrs. Deborah Stafford-Shearer

### Diocese of Palm Beach

Mrs. Elena Muller Garcia  
Mrs. Sheila Gomez

### Diocese of Pensacola-Tallahassee

Mr. Raymond Aguado

### Diocese of Saint Augustine

Mrs. Laura Hickey  
Mrs. Ruby Peters

### Diocese of Saint Petersburg

Mrs. Sabrina Burton-Schultz  
Ms. Deborah L. Close

### Diocese of Venice

Mr. Matthew Caes

## GEORGIA

### Archdiocese of Atlanta

Mrs. Kat Doyle

### Diocese of Savannah

Rev. Daniel Firmin, JCL  
Sr. Pat Brown  
Ms. Rebecca Lehto

## HAWAII

### Diocese of Honolulu

Dr. Dave Coleman

## IDAHO

### Diocese of Boise

Ms. Marcie Wilske

## ILLINOIS

### Archdiocese of Chicago

Ms. Joanna Arellano  
Mr. Jude Huntz

### Diocese of Belleville

Rev. John T. Myler

### Diocese of Joliet

Mr. Tom L. Garlitz

### Diocese of Peoria

Msgr. Richard Soseman

### Diocese of Rockford

Mr. Thomas McKenna

### Diocese of Springfield

Ms. Vicki Compton

## INDIANA

### Archdiocese of Indianapolis

Ms. Theresa Chamblee  
Mr. David Siler

### Diocese of Evansville

Ms. Sharon Burns

### Diocese of Gary

Ms. Anne Verbeke

### Diocese of Fort Wayne-South Bend

Ms. Melissa Wheeler

### Diocese of Lafayette

Msgr. Robert Sell

## IOWA

### Archdiocese of Dubuque

Dr. Tracy Morrison

### Diocese of Davenport

Mr. Kent Ferris

### Diocese of Des Moines

Ms. Nancy Galeazzi

### Diocese of Sioux City

Deacon David Lopez

## KANSAS

### Archdiocese of Kansas City in Kansas

Mr. Bill Scholl

### Diocese of Dodge City

Mr. John Ackerman

### Diocese of Salina

Ms. Michelle Martin

### Diocese of Wichita

Ms. Bonnie Toombs

## KENTUCKY

### Archdiocese of Louisville

Mr. Steven Bogus  
Mr. Mark Bouchard

### Diocese of Covington

Mr. Michael Murray

### Diocese of Lexington

Ms. Ruslyn Case-Compton  
Ms. Meagan Lederman

### Diocese of Owensboro

Mr. Richard Murphy

## LOUISIANA

### Archdiocese of New Orleans

Mr. Patrick Carr  
Mr. Thomas Costanza

### Diocese of Alexandria

Fr. Rick Gremillion

### Diocese of Baton Rouge

Mr. David C. Aguiard  
Mrs. Lisa Lee

### Diocese of Houma-Thibodaux

Mr. Rob Gorman

### Diocese of Lafayette

Deacon Ed Boustany  
Mrs. Stephanie Bernard

### Diocese of Lake Charles

Rev. V. Wayne LeBleu  
Deacon Edward Lavine

### Diocese of Shreveport

Fr. Rothell Price

## MAINE

### Diocese of Portland

Ms. Ruth H. Oakley

## MARYLAND

### Archdiocese of Baltimore

Mrs. Susan Elias

## MASSACHUSETTS

### Archdiocese of Boston

Ms. Holly Clark  
Mrs. Debbie Kincade Rambo

### Diocese of Fall River

Rev. Michael K. McManus

### Diocese of Springfield

Ms. Kathryn Buckley-Brawner

### Diocese of Worcester

Rev. Richard F. Reidy

## MICHIGAN

### Archdiocese of Detroit

Mr. Jason Shanks

### Diocese of Gaylord

Ms. Candace Neff

### Diocese of Grand Rapids

Ms. Maggie Walsh

### Diocese of Kalamazoo

Ms. Lisa Irwin

### Diocese of Lansing

Mr. Vince Gale

### Diocese of Marquette

Fr. Jaime Ziminski

### Diocese of Saginaw

Ms. Terri Grierson

## MINNESOTA

### Archdiocese of Saint Paul and Minneapolis

Mr. Mickey Friesen  
Ms. Kathy Tomlin

### Diocese of Crookston

Ms. Amanda Zurface

## Diocese of Duluth

Ms. Patrice Critchley-Menor

## Diocese of New Ulm

Mr. Christopher Loetscher

## Diocese of Saint Cloud

Mrs. Elizabeth Neville

## MISSISSIPPI

### Diocese of Biloxi

Mr. Gregory Crapo

### Diocese of Jackson

Mrs. Monique Davis  
Mr. Aad de Lange

## MISSOURI

### Archdiocese of Saint Louis

Ms. Jennifer Stanard

### Diocese of Jefferson City

Mr. Mark Saucier

### Diocese of

#### Kansas City-Saint Joseph

Mr. Bill Francis  
Ms. Brooklyn Samson

### Diocese of

#### Springfield-Cape Girardeau

Mr. Nicholas Lund-Molfese

## MONTANA

### Diocese of Great Falls-Billings

Mr. Darren Eultgen

### Diocese of Helena

Ms. Shanna Melton

## NEBRASKA

### Archdiocese of Omaha

Mr. Omar F. A. Gutiérrez

### Diocese of Grand Island

Ms. Kathy Hahn

### Diocese of Lincoln

Rev. Daniel Rayer

## NEVADA

### Diocese of Las Vegas

Mr. Tim O'Callaghan

### Diocese of Reno

Br. Matthew Cunningham, FSR  
Ms. Rita Sloan

## NEW HAMPSHIRE

### Diocese of Manchester

Mrs. Meredith P. Cook, Esq.

## NEW JERSEY

### Archdiocese of Newark

Rev. Timothy Graff

### Diocese of Camden

Ms. Christine Polit

### Diocese of Metuchen

Msgr. Joe Kerrigan

### Diocese of Paterson

Mr. Joseph Duffy

### Diocese of Trenton

Rev. Ed Jawidzik  
Sr. Joanne Dress, DC



# AGENCY LEADERSHIP

## NEW MEXICO

**Archdiocese of Santa Fe**  
Fr. Arkad Biczak  
Ms. Anne Avellone  
**Diocese of Las Cruces**  
Ms. Grace Cassetta

## NEW YORK

**Archdiocese of New York**  
Mr. George Horton  
**Diocese of Albany**  
Ms. Mary Olsen  
**Diocese of Brooklyn**  
Msgr. Terrence J. Mulkerin  
**Diocese of Buffalo**  
Sr. Mary McCarrick, OSF  
**Diocese of Ogdensburg**  
Sr. Donna Franklin, DC  
**Diocese of Rochester**  
Ms. Kathy Dubel  
**Diocese of Syracuse**  
Mr. Joseph Slavik

## NORTH CAROLINA

**Diocese of Charlotte**  
Mr. Joseph Purello  
**Diocese of Raleigh**  
Fr. Michael Butler  
Ms. Melissa DuCharme

## NORTH DAKOTA

**Diocese of Bismarck**  
Mr. Ron Schatz  
**Diocese of Fargo**  
Very Rev. Luke Meyer

## OHIO

**Archdiocese of Cincinnati**  
Ms. Pam Long  
Mr. Tony Stieritz  
**Diocese of Cleveland**  
Ms. Kelly Ann Davis  
**Diocese of Columbus**  
Ms. Erin Cordle  
**Diocese of Toledo**  
Mr. Biff Rocha  
**Diocese of Youngstown**  
Mr. Brian Corbin

## OKLAHOMA

**Archdiocese of Oklahoma City**  
Ms. Marlene Rosbach  
Ms. Angela Schmidt  
**Diocese of Tulsa**  
Deacon John M. Johnson, Ph.D.  
Ms. Lori Hahn

## OREGON

**Archdiocese of Portland**  
Most Rev. Peter Smith  
Mr. Matt Cato  
**Diocese of Baker**  
Ms. Peggy Buselli

## PENNSYLVANIA

**Archdiocese of Philadelphia**  
Mrs. Anne Ayella  
**Diocese of Allentown**  
Mr. Robert Olney  
**Diocese of Altoona-Johnstown**  
Sr. Patti Rossi  
Rev. Robert J. Kelly  
**Diocese of Erie**  
Mr. Dennis Grant  
**Diocese of Harrisburg**  
Mr. Peter Biasucci  
**Diocese of Pittsburgh**  
Ms. Helene Paharik  
**Diocese of Scranton**  
Ms. Catherine Butel  
Ms. Teresa Osborne

## RHODE ISLAND

**Diocese of Providence**  
Rev. Robert P. Perron  
Ms. Kathy McKeon

## SOUTH CAROLINA

**Diocese of Charleston**  
Ms. Caroline Weisberg

## SOUTH DAKOTA

**Diocese of Rapid City**  
Ms. Veronica Valandra  
**Diocese of Sioux Falls**  
Mr. Jerome Klein

## TENNESSEE

**Diocese of Knoxville**  
Mr. Paul Simoneau  
**Diocese of Memphis**  
Mrs. Therese Gustaitis  
Ms. Christine Hash  
**Diocese of Nashville**  
Deacon Hans Toecker

## TEXAS

**Archdiocese of Galveston-Houston**  
Ms. Hilda Ochoa  
**Archdiocese of San Antonio**  
Rev. Martin Leopold  
**Diocese of Austin**  
Ms. Barbara Budde  
**Diocese of Beaumont**  
Ms. Letty Lanza  
**Diocese of Brownsville**  
Mr. Miguel Santos  
**Diocese of Corpus Christi**  
Fr. Raynaldo Yrlas  
**Diocese of Dallas**  
Mr. Joshua Clemmons  
Ms. Michelle Gagne  
**Diocese of El Paso**  
Rev. Tony Celino

## Diocese of Fort Worth

Mr. Peter Flynn  
**Diocese of Lubbock**  
Mr. B. Marty Martin  
**Diocese of San Angelo**  
Rev. Hubert Wade  
**Diocese of Tyler**  
Mr. Jim Smith  
**Diocese of Victoria**  
Fr. Dan Morales

## UTAH

**Diocese of Salt Lake City**  
Mr. Lyle Crocker  
Ms. Jean Hill

## VERMONT

**Diocese of Burlington**  
Ms. Denise Payea

## VIRGINIA

**Diocese of Arlington**  
Ms. Carla Walsh  
**Diocese of Richmond**  
Ms. Caroline Stanfill

## WASHINGTON

**Archdiocese of Seattle**  
Mr. J. L. Drouhard  
Ms. Kelly Hickman

**Diocese of Spokane**  
Mr. Scott Cooper  
Mr. Rob McCann

**Diocese of Yakima**  
Fr. Robert Siler

## WEST VIRGINIA

**Diocese of Wheeling-Charleston**  
Rev. Brian O'Donnell, SJ

## WISCONSIN

**Archdiocese of Milwaukee**  
Mr. Rob Shelledy  
Ms. Kathy Shine  
**Diocese of Green Bay**  
Mr. Eric Weydt  
**Diocese of La Crosse**  
Mr. Christopher Ruff, STL  
**Diocese of Superior**  
Mr. Steve Tarnowski

## WYOMING

**Diocese of Cheyenne**  
Mr. Matthew Potter

## MILITARY SERVICES

**Archdiocese of Military Services**  
Deacon Michael Yakir

## U.S. VIRGIN ISLANDS

**Diocese of Saint Thomas**  
Mr. Michael Akin

### Dr. Carolyn Y. Woo

*President & CEO*

### Sean Callahan

*Chief Operating Officer*

### Mark Melia

*Executive Vice President, Charitable Giving*

### Pamela O'Connor

*Executive Vice President, Human Resources*

### Mark Palmer

*Executive Vice President & Chief Financial Officer*

### Annemarie Reilly

*Executive Vice President, Strategy and Organizational Development*

### Joan Rosenhauer

*Executive Vice President, U.S. Operations*

### Schuyler Thorup

*Executive Vice President, Overseas Operations*



# CRS BOARD OF DIRECTORS

**Archbishop Paul S. Coakley**

Chair

Archdiocese of Oklahoma City  
November 2013–present

**Bishop Gerald F. Kicanas**

Chair

Diocese of Tucson  
November 2010–November 2013

**Mr. Glenn M. Creamer**

Treasurer

Senior Managing Director  
Providence Equity Partners, Inc.

**Msgr. Ronny Jenkins**

Secretary

General Secretary  
United States Conference of Catholic Bishops

**Dr. Viva O. Bartkus**

Associate Professor  
University of Notre Dame

**Bishop William P. Callahan, OFM Conv.**

Diocese of La Crosse

**Bishop Joseph R. Cistone**

Diocese of Saginaw

**Bishop Frank J. Dewane**

Diocese of Venice

**Mr. Kevin R. Farrell**

Farrell Mudd Development

**Bishop Cirilo Flores\***

Diocese of San Diego

**Bishop Daniel E. Flores**

Diocese of Brownsville

**Dr. Patrick T. Harker**

President, University of Delaware

**Bishop Martin D. Holley**

Archdiocese of Washington

**Sister Carol Keehan**

President & CEO  
Catholic Health Association of the United States  
September 2008–August 2014

**Archbishop George J. Lucas**

Archdiocese of Omaha

**Bishop Richard J. Malone**

Diocese of Buffalo

**Bishop Gregory J. Mansour**

Eparchy of Saint Maron of Brooklyn

**Cardinal Theodore E. McCarrick**

Archbishop Emeritus  
Archdiocese of Washington

**Mrs. Jeri Eckhart Queenan**

Partner, Global Development Practice Area Head  
The Bridgespan Group

**The Honorable Geraldine E. Rivera**

Santa Fe, New Mexico

**Bishop Arthur J. Serratelli**

Diocese of Paterson

**Archbishop Michael J. Sheehan**

Archdiocese of Santa Fe  
January 2008–December 2013

**Mrs. Charmaine Warmenhoven**

Trustee, Catholic Foundation

**Bishop John C. Wester**

Diocese of Salt Lake City  
January 2008–December 2013

# CRS FOUNDATION BOARD OF DIRECTORS

**Cardinal Theodore E. McCarrick**

Chair

Archbishop Emeritus  
Archdiocese of Washington

**Mr. Glenn M. Creamer**

Vice-Chair

Providence Equity Partners Inc.  
Providence, Rhode Island

**Archbishop Paul S. Coakley**

Archbishop of Oklahoma City

**Mr. Gerald F. Dowling**

Retired Executive  
Villanova, Pennsylvania

**Archbishop Joseph A. Fiorenza**

Archbishop Emeritus of Galveston–Houston

**Mrs. Pam Gilardi**

The Father's Table Foundation  
Heathrow, Florida

**Mrs. Julie Jansen Kraemer**

Wilmette, Illinois

**Mr. James N. Perry, Jr.**

Madison Dearborn Partners  
Chicago, Illinois

**Mr. Christopher C. Quick**

The Quick Family Foundation  
New York, New York  
April 2007–December 2013

**Mrs. Karen Rauenhorst**

Community Volunteer  
Long Lake, Minnesota

**Mrs. Jessica Stark**

Ochylski Foundation  
Parkland, Florida

**Bishop William S. Skylstad**

Bishop Emeritus of Spokane

**Mr. Dennis Tippmann**

Tippman Industrial Products  
Fort Wayne, Indiana  
October 2010–December 2013

**Mr. Stephen Walsh**

Western Asset  
Boulder, Colorado

**Mr. Arthur Wigchers**

Retired Executive  
Brookfield, Wisconsin

**Mrs. Agnes N. Williams**

Attorney  
Potomac, Maryland

**Dr. Carolyn Y. Woo**

President & CEO  
Catholic Relief Services

\*deceased



# ACKNOWLEDGED WITH GRATITUDE

Our mission takes us out into the world, to serve the poor and vulnerable. We gratefully acknowledge the donors and supporters who go with us in spirit, who enable us to provide immediate relief in response to crisis and to break the cycle of poverty through programs in 101 countries.

We rely on the help of the churches, dioceses, schools and other organizations, as well as on the generosity of individual donors—not only those listed here, who have donated \$10,000 or more, but on the many members of our Catholic community who give donations large or small, and help spread the word about CRS.

## ■ President’s Circle

*CRS is grateful for the dedication offered by the **President’s Circle members**, whose gifts in fiscal years 2012, 2013 and 2014 have provided unrestricted support to the agency. We wish to recognize them for sharing Dr. Carolyn Y. Woo’s vision of “common good, uncommon excellence.”*

## INDIVIDUAL DONORS

### A

Anonymous (386)  
**A Retired Priest**  
Mr. Robert & Mrs. Elizabeth Ackerman  
**Mr. Victor T. Adamo**  
Ms. Therese Allam  
Mr. David Allen  
Mr. Thomas & Dr. Karen Allen  
Rev. Philip T. Allen  
Mr. & Mrs. Peter Amann  
**Ms. Jeanne Anderson**  
**Mr. L. Angel**  
Mr. Paul Appel  
**Mr. Peter & Mrs. Terri Arcidiacono**  
Charles & Lucille Armbrust  
Beth, Kathy and Don Awalt

### B

Mr. Nicholas & Mrs. Rebecca Bain  
**Mr. Stephen & Mrs. Judith Balek**  
**Mr. & Mrs. Julie Ballesteros**  
Mr. Tadeusz Barbusinski & Ms. Karen Tanida  
Mr. William & Mrs. Christine Barr  
**Mr. & Mrs. James L. Barrett**  
M. F. Barror  
**Mr. & Mrs. Robert Bartels**  
**Mrs. Eleanor F. Barton**  
Mr. Rodolfo Batarse  
**Mr. Thomas Bauer**  
The Rev. William J. Bausch  
Mr. Thomas & Mrs. Mary Bednarz  
**Dudley & Kathleen Bennett**  
**Mr. Paul Bennett**  
Mr. & Mrs. Albert Bergeron  
Mr. Mitchell Bernal  
**Mr. Craig Bertelsen**  
Victoria Beynon  
Mr. Paul Bishop  
Mr. & Mrs. Jim & Jackie Bitz  
**Archie Black & Jane McDonald Black**  
**Mr. & Mrs. George R. Blaha**  
Mr. Bruce Blakeman  
Mark A. & Nancy Briggs Blaser  
**Mr. Thomas Bliznick**  
Mr. Dixon Boardman  
**Mr. Darrell & Mrs. Kathleen Boff**  
**Bob & Dr. Laura Boldt**  
F. Gregory & Karen Bond

**Mr. Christopher Booms**  
Mr. William & Mrs. Marla Borton  
Mr. Fernando Bosch  
Ms. Mary Boucher  
Dr. Michael Bova  
Dennis & Lorrie Brady  
**Arnold & Judy Bramlett**  
**Fr. Robert Brazaskas**  
Dennis & Terri Brazier  
Mr. & Mrs. Breitbach  
Mr. Michael J. Brennan  
Mr. & Mrs. John J. Brennan  
**Mr. & Mrs. Joseph L. Brennan**  
**Jim & Lynn Briody**  
**Eugene & Mary Jane Brisbane**  
**Ms. Mary Brooks**  
Mr. & Mrs. Robert Brooks  
**Ms. Kathleen Brosnan**  
Frank G. & Frieda K. Brotz  
Family Foundation  
**Mr. & Mrs. William Brown**  
Mr. Daniel Bryan  
Peter Buck  
Mr. S. Buckley  
Mr. Henry Burgess  
**Mr. Tim & Mrs. Lisa Burridge**  
Ms. Marylane T. Burry  
**Mr. & Mrs. David Burton**

### C

**Mr. & Mrs. Thomas Cahill**  
**Mr. Lawrence & Mrs. Virginia Cain**  
Rev. Francis Callahan  
The Honorable Lawrence L. Cameron  
Ms. Sharon Campbell  
Mr. & Mrs. Jean Camy  
Geraldine Carolan & Barry Tolbert  
Mr. & Mrs. Bill Carpenter  
**Mr. Michael & Mrs. Cathryn Carr**  
Rev. Philip Caruso  
Mary Lee & Hampton Carver  
**Mr. & Mrs. David L. Castaldi** in memory  
of Lawrence & Ruth Castaldi  
Mr. & Mrs. William Cavanaugh, III  
Mr. & Mrs. Paul J. Choquette  
**Mr. Michael & Mrs. Angela Christie**  
Mr. Luis Chu  
Mr. Doo Chung  
Mr. & Mrs. Richard P. Coley  
**Mr. Sean Connelly**  
Ms. Anita Connelly  
Mrs. Lois & Mr. John F. Connole  
**Richard L. Conroy**  
**John & Maureen Copp**  
Ms. Cecilia Coppel  
Mrs. Mary & Mr. Daniel Corley  
Tom Corra & Dara Concagh  
**Catherine F. Corrigan**  
John & Emily Costigan  
Mr. Douglas Coyle  
Mr. & Mrs. Glenn Creamer  
Mr. & Mrs. Jerome J. Crowley, Jr.

Mr. Chris Cullinane  
**Mr. Mark Curran & Ms. Margaret Straub**  
Ms. Helen S. Curry  
**Mr. John & Mrs. Winifred Curry**

### D

**Mr. & Mrs. Stephen C. Daffron**  
Mr. & Mrs. Edward H. D’Alelio  
**Barry Daly & Jane Dowling**  
**Dr. Bernard Dauenhauer & Dr. Jean Friedman**  
**Dr. James & Susan David**  
**Mr. & Mrs. George E. Davis**  
**Mr. & Mrs. Lester T. Davis**  
Mr. & Mrs. Wayne Davis  
Mrs. Marjorie Dawson  
**John & Lenore de Csepel**  
**Ms. Kathleen Deakins**  
Miles & Rebecca Dean  
**Dr. Michael A. Deck**  
Rev. L. Edward Deimeke  
**Mr. Donald T. Delamore**  
Mr. & Mrs. Paul Dennison  
**Nicole Derrico & Family**  
Mr. Kevin & Mrs. Virginia Desmond  
Mr. John & Mrs. Mary Diamond  
Mr. & Mrs. Pablo Diego  
Robert & Diane Diens  
**Msgr. Conrad R. Dietz**  
Mr. Dennis Dill  
**Tom & Mary Dinndorf**  
**Dr. Patricia M. Dinneen**  
Mr. & Mrs. John Dirksing  
**Mr. & Mrs. Stephen Dixon**  
**Ms. Nuong Do**  
Mr. Michael & Mrs. Jennifer Doherty  
Dr. Michelle Dolan  
Mr. Lawrence A. Dollman  
**Mr. Allan Domingue**  
**Michael & Maureen Donahue**  
**Mr. James & Mrs. Flo Donovan**  
Mr. Robert & Mrs. Rita Doody  
Mr. & Mrs. Brian Dooney  
Sr. Mary Doskey  
**Dr. & Mrs. Ralph M. Doughton**  
Dorothy & John Doughty  
In memory of Rosemary A. Dowling  
**Mr. Thomas Dowling**  
**Msgr. James Doyle**  
**Mr. John & Mrs. Julie Dubuque**  
**Mr. Charles & Mrs. Judith Duffy**  
**Joseph & Dorothy B. Duffy**  
Norman & Cynthia Duffy  
Walter A. Duffy  
**Mrs. Jeannette Dufilho**  
Mr. & Mrs. Richard J. Dugas Jr.  
**Mr. Charles & Mrs. Rosalie Dunham**  
Mr. Bob & Mrs. Mary Duphiney  
Mr. Richard Durkin & Ms. Ann Thivierge  
Ms. Mary Dvorak  
**Ms. Jacqueline M. Dyer & Mr. Keith H. Hammonds**

### E

**Mr. & Mrs. Matthew E. Edmonds**  
Mrs. Ruth Egler  
**Mr. Joseph & Mrs. Gail Ellias**  
**Dr. & Mrs. Peter G. Ellis**  
**Dr. Peter Ellis**  
Rev. Msgr. D. Endebrock  
**Mr. Charles Engel & Mrs. Ivy (Eifionah) Main**  
Mr. James & Mrs. Sheila Etter  
**Mr. Bill & Mrs. Lois Evans**  
**Mr. John & Mrs. Kelli Evans**  
**Mr. William Evans & Ms. Robin Riddle**

### F

Mr. & Mrs. Richard M. Fabbro  
**Mr. Brad Fagan**  
Rev. James Falsey  
Mr. Eugene & Mrs. Sallyann Fama  
**Fr. Leo Farley**  
**Mr. & Mrs. Kevin R. Farrell**  
Dr. Jeanne Fastook  
**Mr. Jeffrey & Mrs. Rebecca Feeney**  
Robert & Linda Fetch  
**Mr. John Fischer**  
Mr. & Mrs. James Fitzgerald  
In memory of Gertrude & Duane Flaherty  
Mr. & Mrs. John Flaherty  
Mr. & Mrs. Michael Flaherty  
**Mr. & Mrs. William J. Flanagan**  
**Mr. David Fleury**  
Mr. Fred Flosi  
**Mr. Ronald Foisy**  
**Sheila & Lawrence Foley**  
Mr. David Fox  
Mr. Vincent Freda  
Mr. Antony & Mr. Wendar Fu  
Mr. Richard & Mrs. Edna Fukumoto

### G

**Mr. John & Mrs. Gail Gai**  
Mrs. Patricia Gamble  
**Ms. Nelia Garcia**  
**George & Mary Garvey**  
**Mr. Paul & Mrs. Frances Garvey**  
**Mr. Dennis & Mrs. Kathleen Gasick**  
Mr. James & Mrs. Zita Gavin  
**Mr. John N. Gavin**  
Mr. Thomas Geldermann  
Mr. James & Mrs. Mary Gibney  
**Mr. Michael Gibson**  
Msgr. Lawrence Gibson  
**Mr. & Mrs. Frank Gilardi**  
Mr. Gerald E. Gill  
Raymond P. & Marie M. Ginther  
**Mr. Donald & Mrs. Cate Girsakis**  
Mr. & Mrs. Ronald Gonzales  
Ms. Mary Goode  
**Mr. Roger & Mrs. Virginia Goodman**  
Mr. Stephen V. Gorla  
**Mr. Robert & Mrs. Linda Graham**  
**Bishop Charles Grahmann**  
**Mr. Christopher Grant**  
**Mr. Guy Gravel**  
**Mr. Ronald & Mrs. Karen Greenwell**  
**Mr. & Mrs. Thomas J. Gregory**  
**Dr. Paul & Mrs. Eileen Gretkierewicz**  
**Mr. & Mrs. Fred Gretschn**  
**Mary & Todd Grote**  
Mr. Bo & Mrs. Mary Gunlock  
Mary & Bo Gunlock Family Fund  
The Guthrie/Reinsdorf Family  
Mr. & Mrs. Robert P. Gwynn

### H

Mr. & Mrs. E. Haag  
Mr. & Mrs. Robert Haas  
Mr. Francis & Mrs. Kathleen Hager  
Mr. James Hailey  
Mr. Gerard Halaska  
**Mr. Charles Hall**  
Brenda & Gregory J. Hamer Sr.  
Ms. Carol Hamilton  
Rev. & Mrs. Bill Hampton

Gregory & Sarita Hanley  
Mr. Walter Hanley  
**Patrick & Emily Harker**  
**Mr. Steven & Mrs. Sue Hart**  
Mr. Hilmer Hartman  
Mr. James Hassenstab  
**Dr. Richard & Mrs. Mary Hattan**  
Ms. Patricia Hawig  
Ms. Helen M. Healy  
**Jeanne & Michael Heekin**  
**Dr. Thomas Heinzl**  
Mr. Donald & Mrs. Audrey Heinzen  
**Mr. & Mrs. Ivan Held**  
**Mr. Gordy Hellenbrand**  
**Mr. Patrick & Mrs. Juliann Heller**  
Mr. & Mrs. W. Helsel  
Mr. Kent Hemberger  
**Jean & John B. Henkels**  
Mr. James J. Hennessy  
**Dr. Peter & Mrs. Maureen Herbert**  
**Mr. Adrian & Mrs. Hill**  
Rev. Eric Hill  
Col. Joseph & Mrs. Constance Hines  
**Mr. James & Mrs. Colette Hipolit**  
Dr. & Mrs. Thomas R. Hoberock  
Mr. Robert Hoehn  
Mr. Robert & Mrs. Connie Hoff  
**Mr. Erle Holm**  
Mr. & Mrs. Andrew Honzel  
**Dr. Nicholas & Mrs. Ruth Horangic**  
**Mr. Donald & Mrs. Barbara Howe**  
**Catherine & Robert Howell**  
Dr. John & Mrs. Susan Howland  
Dr. & Mrs. Carl C. Hug, Jr.  
**Dr. M. Hurtubise**  
**Mr. Thomas Hychalk**  
Mr. John B. Hynes

### I

**Ms. Elizabeth Irvin**

### J

Mr. Robert & Mrs. Maria Jennett  
**Mr. Gerard & Mrs. Linda Jensen**  
Ms. Pamela Johnson  
Mr. Lance Jones  
**Mr. Gregory & Mrs. Anne Jordan**  
**Yvonne & Damien Jordan**  
**Laurence Joy**  
Mr. Dennis Joyce  
Mr. John Joyce  
**Mr. George & Mrs. Virginia Jurkowich**  
**Mr. Charles & Mrs. Mary Juster**

### K

**Mr. Michael Kalt**  
**Mr. Stephen Kamak**  
**Mr. Akitoshi Kan**  
Albert J. & Diane E. Kaneb Family Mr. & Mrs. John A. Kaneb  
Mr. Peter Kaneb  
Stephen & Andrea Kaneb  
**Mr. & Mrs. Francis J. Karpinski**  
Mr. Vincent & Mrs. Candace Kasperick  
**Fr. Anthony Kazarnowicz**  
Ms. Melissa Kean  
**Mr. Peter & Mrs. Eilish Keating**  
Mr. Kevin & Mrs. Charlotte Keenan  
Mr. Patrick & Mrs. Gwen Keeney  
**Mr. Christopher & Mrs. Dena Kellogg**  
Mr. Kurt & Mrs. Kathleen Kellogg  
Rev. Charles Kelly  
Dr. Kevin Kelly  
Mr. Patrick Kelly  
**Dr. Richard & Mrs. Mary Kemme**  
**Mr. John Kemmerer**  
Mr. Geoffrey Kennedy  
**Mary Angela Kernan**  
Mr. George Keulen  
**Dr. Robert J. Kilian**  
Mr. Addison & Mrs. Joan Kilibarda  
**Mr. & Mrs. David Kimbell Jr.**  
Frank & Dolores Kinn  
**Mr. John Klinger**  
**Mrs. Emily & Mr. Mark Koczela**  
**Stan & Julie Koenigsfeld**

Bud & Francine Kohout  
**Dr. & Mrs. Nicholas P. Kokx**  
**Mr. Frank & Mrs. Sharon Komin**  
**Mary & John Korey**  
**Catherine & Philip Korsant**  
Mrs. Alice P. Kosiba  
Harry & Julie Jansen Kraemer  
**Dr. & Mrs. Joseph Krainak**  
**Mr. Kevin & Mrs. Janice Kreuz**  
Mr. Gregory & Mrs. Bernadette Krohm  
Ms. Karen Kuczynski  
Mr. Raymond & Mrs. Frances Kummer  
Mr. Anthony J. Kuzminski  
**Mr. & Mrs. Vincent Kyle**

### L

**Mr. Frank & Mrs. Julia Ladner**  
**Ms. Lillian Lafond**  
**Mr. John Lamacchia**  
**John & Annice Lane**  
Mr. Robert Latham  
**Mr. William & Mrs. Lisa Lawler**  
Eileen & John Lawler  
**Mr. Robert & Mrs. Roxanne Lawless**  
**Mr. & Mrs. Joseph Lawrence**  
Mrs. Laura Le Goff  
**Mr. & Mrs. William E. Leahey, Jr.**  
**Mr. & Mrs. John J. Leahy**  
**Mr. & Mrs. CTL**  
**Mr. James & Mrs. Melissa Ledlow**  
**Mr. Robert & Mrs. Alice Leiden**  
**Mr. Michael Lemonds**  
**Mr. Thomas Leonard**  
**Mr. John Leschke**  
Mr. & Mrs. Thomas Liu  
**Dr. & Mrs. Kenneth Locke**  
**Mr. William R. Loichot**  
Mr. Thomas & Mrs. Katie Lorden  
**Mr. Lee & Mrs. Susan Loudon**  
**Daniel & Nancy Loughran**  
Mr. James & Mrs. Ellen Lutz  
Mr. Michael & Mrs. Margaret Lynch  
Mr. & Mrs. David Earl Lynch

### M

Joan G. Maddy  
**Mr. & Mrs. Thomas M. Maguire**  
**Mr. William Maguire & Ms. Joanne Zervos**  
**Mrs. Rita Malin**  
Mr. Joseph & Mrs. Virginia Mallof  
Mr. Thomas Malm  
**Mr. Edward & Mrs. Mary Malone**  
**Henry B. Maloney**  
Mr. & Mrs. Patrick Mandracchia  
**Mr. Gerard Manning & Mrs. Marie O’Farrell**  
**Mr. Timothy & Mrs. Ramona Marks**  
**Alice A. & Rex Martin**  
**Roxanne Martino**  
**Mr. Daniel Marus**  
**Richard P. & Yasuko S. Mattione**  
**Mr. Richard B. Mauro**  
Fr. Joseph Maynard  
Fr. James McAuley  
The McCarthy Family  
Rev. Kieran McCormick  
**Walter & Mary Lou McCormick**  
Ted & Tracy McCourtney  
Mr. James McDermott  
**Nancy & Kevin McDewitt**  
Mr. William & Mrs. Therese McGill  
Mr. James McGlynn  
Mr. James & Mrs. Marie McGowan  
**Mr. & Mrs. John McGreevy**  
**Mr. Stephen & Mrs. Rebecca McKernan**  
Mr. Mark & Mrs. Karen McLaughlin  
**Marian F. McNamara, M.D.**  
John P. & Anne Welsh McNulty  
Foundation  
Mrs. Dolores & Mr. David McQuilkin  
Mr. Robert & Mrs. Betty Meade  
**Mr. Jose Meseguer**  
Mr. Robert Metcalf  
Ms. Kазie Metzger  
Mr. Robert & Mrs. Rosemary Meyers  
Thomas F. & Judith G. Mich  
Mr. Lawrence Mick

Mr. & Mrs. Donald F. Middleton  
Rev. Louis Miller  
Christopher B. Mobley Memorial Fund  
**Mr. Edward & Mrs. Phyllis Molnar**  
**Ms. Megan Montgomery**  
Paul & Sandra Montrone  
**Dr. Carlos Moreyra**  
Mr. Albert Mueller  
Charles W. Mulaney Jr.  
**Fr. Martin Muller**  
**Mr. & Mrs. Eugene F. & Mary M. Murphy**  
**Mr. George F. Murray**  
Mr. & Mrs. John J. Murphy Jr.  
**Mr. Patrick Murphy & Ms. Diane Vosberg**  
**Mr. & Mrs. William M. Murphy, III**  
**Mr. & Mrs. William O. Murphy**  
**Mr. Brian Murray**  
Pat & Troy Murray  
**Mr. Michael Murton**  
**Dr. Vincent Muscarella**  
**Mr. Richard & Bernie Muus**  
**Mr. Charles Myler**

**N**

Mr. George & Mrs. Janine Nagrodsky  
**Mr. & Mrs. Raymond Nass**  
**Mr. Thu Ngo**  
**Mr. Peter & Mrs. Teresa Nicholl**  
**Mr. Robert & Mrs. Kate Niehaus**  
Gerald & Monica Nilles  
Mr. Gregory & Mrs. Peggy Nilles  
**Mr. John & Mrs. Ellen Njos**  
**Mr. Sean Nolan & Ms. Marita O'Sullivan**  
**Mrs. Michele Nolen & Mr. George Nolen**  
Mr. Kenneth Nolen

**O**

Ms. Erin O'Brien  
Mr. & Mrs. Robert C. O'Brien  
Mr. William & Mrs. Mary Ochsner  
Mr. John O'Connor  
**Mr. & Mrs. Thomas O'Connor**  
**Ms. Mary O'Hern**  
Mr. P. O'Kray  
**Mr. Gerard O'Neill**  
**Mr. John O'Neill**  
Mr. John O'Neill  
**Mr. & Mrs. James Orenga**  
**Mark & Rita O'Rourke**

**P**

Mr. Paul Pakalski  
**Mr. Chris & Mrs. Hannah Palm**  
Mr. John Palmeri  
Mr. William F. Palmeri  
**Thomas J. Palumbo**  
Mr. & Mrs. Michael C. Pascucci  
**Mr. James & Mrs. Joanne Pavlica**  
Molly & James Perry, Jr.  
Ms. Patricia Pelling  
Dr. Gail & Ms. Jan Person  
**Miss Gloria Petitto**  
**Mr. Francis Petracek**  
Mr. George Pfaff  
Ms. Jane Pfeiffer  
**Mr. Prashanth Philip**  
**Dr. John D. Phillips**  
**Mr. Peter & Mrs. Mary Phillips**  
**Mr. Leslie Pichery**  
Mr. & Mrs. Joseph Pichler  
**Mr. Todd & Mrs. Maureen Pierce**  
**Mr. Fred & Mrs. Sharon Pisciotta**  
Mr. & Mrs. Keith Pitts  
**Rev. Loren Pohlmeier**  
**Mr. Arthur Potter**  
**Mr. & Mrs. William Powell**  
**Mr. Richard Puckett**

**Q**

**Mr. Charles Queenan &**  
**Mrs. Jeri Eckhart Queenan**  
**Mr. John Queralt**  
**Mr. George & Mrs. Carolyn Quinn**

**R**

Mr. John Reding  
Mr. Marty Reichlin  
Mr. Paul Reid  
Mr. L. & Mrs. Beverly Reinig  
Ms. Nancy Reller  
**Mr. & Mrs. Jack Remick**  
Mr. Alec Rhodes  
Anne & Ed Rice  
Mr. Ronald & Mrs. Margaret Riesmeyer  
**Mrs. Zita Riley**  
Mr. Matt & Mrs. Red Rissi  
**Mr. & Mrs. Frank E. Ritchey**  
**Lynne Lutenbacher Roberts**  
Mr. & Mrs. Robert Roenitz  
**Mr. Joseph & Mrs. Corinne Rogers**  
Mr. Brian Rogers  
Mr. Brian Rogers  
**Ronald Roggenbuck**  
Mrs. Dorothy Roth  
Dr. & Mrs. David Rowekamp  
**Ms. Catherine Rowland**  
Mr. & Mrs. Dan R. Royer  
**Ms. Carolyn Ruppert**  
Dr. & Mrs. Daniel Rushing  
Mr. John & Mrs. Rita Ryan

**S**

Mr. Robert Saltiel  
**Mr. & Mrs. Michael Sanchez**  
**Ms. Elizabeth Savant**  
Lisa & Mark Schafale  
**Mr. Steven Schaller**  
**Elmer J. & Barbara A. Schefers**  
**John & Deborah Scheid**  
Mr. & Mrs. Peter A. Schmid  
Mr. John Schoolfield  
Mr. Charles Schroeder  
**Mr. & Mrs. Kriss Schroeder**  
Mr. William & Mrs. Jennifer Schultz  
Ms. Catherine Schwab  
**Mr. Richard & Mrs. Carla Scudellari**  
**Mr. & Mrs. Paul E. Sebastian**  
John & Margaret Seidel  
**Mr. & Mrs. Vincent P. Seiler**  
**Ms. Barbara Semans**  
Mr. Matt Sery  
Rev. Joseph N. Sestito  
**Jim & Marie Seward**  
**Mr. & Mrs. Ronald Sforza**  
Mr. Michael Shaeffer  
**In memory of Alice Shaffer**  
Mr. Hugh F. & Mrs. Barbara N. Sheehy  
Mr. Donald & Mrs. Joan Shelton  
Mrs. Mary Sheppard  
Mr. Dan & Mrs. Sallie Shipley  
Mr. & Mrs. Dennis D. Shoener  
Mr. Joseph Sifer  
Rev. Andrew Sigmund  
**Mr. R. & Mrs. Mary Sim**  
Mr. Roy F. Simperman  
**Dr. Antonio & Dr. Emilie Siochi**  
**Mr. David & Ms. Christine Smith**  
Mr. Michael & Mrs. Patty Smith  
**Mr. Robert E. Snyder**  
**Sogge Family Fund**  
Mr. Brian Soukup  
Mr. George & Mrs. Nancy Soule  
Rev. Paul Spellman  
Brian & Carolan Stansky  
Mr. & Mrs. Thomas M. Stemlar  
Dr. Mitchell Stickler &  
Dr. Melody Benson  
Mr. John Stiefel  
Mr. William Stiefel  
**Mr. & Mrs. Pete Stiglich**  
**Mr. Tom Stinebaugh**  
**Donald & Mary Stirling**  
Mr. Jonathan & Mrs. Jenny Stupka  
**Mr. James Stynes &**  
**Mrs. Photeine Anagnostopoulos**  
Mr. Sungman Suh  
**Mr. Charles Sullivan**  
**Rev. James M. Sullivan**

Nancy S. Sweetland  
**Rev. Mr. & Mrs. Steve Swope**  
Brendan & Kerry Swords  
**Mr. Charles & Mrs. Rochelle Szews**  
Ms. Genevieve Szuba

**T**

**Mr. & Mrs. Michael J. Tangney**  
Dr. Anthony J. Matan & Dr. Silvia Teran  
**Mr. Ben & Mrs. Pam Thomas**  
Mr. Jeff Thomas  
Mr. Elijah Thomson  
**Mr. Stanley & Mrs. Tippmann**  
**Mr. & Mrs. Dennis Tippmann Sr.**  
**Drs. Wyatt & Melanie To**  
**Dr. David Tomanek**  
Dr. Matthew & Dr. Alaina Tonelli  
Mr. Donald J. Tourney  
**Mr. Thomas & Mrs. Julie Townsend**  
**Mr. Todd Treon**  
Ms. Sylvia & Mr. Theodore Trumble  
Ms. Dolores Tukich  
**Mr. Eugene C. Tuohy**  
David & Evelyn Tybor

**V**

**Mr. & Mrs. Richard S. Vale**  
Mr. Gaetan Van De  
Mr. Andrew Van Duzer  
**Mr. Reginald Van Eekeren**  
**Mr. & Mrs. Thomas VanHimbergen**  
Mr. Tom & Mrs. Joan VanSloun  
In Memory of  
Rachael Dougherty Vaughan  
**Dr. & Mrs. Frank Viverette**  
**Mr. Eric & Mrs. Patricia Vogel**  
Ms. RoseAnn Vogt  
**Mr. Theodore & Mrs. Kathryn Volz**  
Mr. Ernest M. von Simson

**W**

**Mr. Richard & Mrs. Kathryn Wagner**  
**Msgr. Raymond Wahl**  
Charles A. Walsh III  
Mr. Larry & Mrs. Sharon Walsh  
**Mr. John Walter**  
**Tom Walter & Cindy Clarke**  
**Darlene M. Ward**  
Mr. & Mrs. Sedgwick Ward  
Mr. Doug Watkins & Ms. Diana Gabaldon  
Mr. Joseph & Mrs. Margaret Weaver  
**Mr. William & Mrs. Virginia Weaver**  
Mr. & Mrs. Christopher Weege  
**Mr. Linden & Mrs. Judith Welch**  
Mr. & Mrs. Timothy B. Welch  
**Ms. Judith West**  
**Mr. Robert Westropp &**  
**Mrs. Maria Westropp**  
Mr. Thomas & Mrs. Luisa White  
**Francis Wichman & Pamela Stubsten**  
Mr. & Mrs. Peter A. Wickstrand  
Mr. Garth Will  
**Agnes N. Williams**  
Mrs. Janet Williams  
Mr. William J. Williams Jr.  
Mr. H. Willis  
**Mr. Edward & Mrs. Barbara Wilson**  
**Ruth & Joe Wimsatt**  
Mr. James & Mrs. Merri Windmiller  
**Mr. Charles &**  
**Mrs. Nazlihan Wintermeyer**  
Mr. Thomas P. Wisniewski  
**Mr. Jeff & Mrs. Rebecca Wittrock**  
**Mr. James Woerber**  
**Dr. & Mrs. Michael J. Wolohan**  
**Mr. David Wong**  
**Dr. John Wood**  
Mr. Joseph Wood  
**Mr. Daniel Woods**  
**Mr. Patrick B. Woods**

**Y**

Mr. Charles & Mrs. Penny Yost  
Mrs. Elizabeth & Mr. Gary Young

**Z**

**Mr. Clarence Zacher**  
Mr. John & Mrs. Kathleen Zamer  
Mrs. Elizabeth & Mr. Gary Young  
Joe Yuhas  
**Mr. Clarence Zacher**  
Mr. John & Mrs. Kathleen Zamer

**ANNUITY DONORS**

*Many of you have generously chosen to support CRS by establishing a Charitable Gift Annuity. We are honored to recognize those who did so during fiscal year 2014.*

Anonymous (39)  
Fr. Bernard Ahern  
Mr. William & Mrs. Ruth Anderson  
In memory of Evelyn Kay Bahnsen  
Rev. John Basil  
Rev. Louis Benoit  
Bob & Betty Bergeron  
Mary Anne Bland  
Joan K. Bleidorn  
Mr. John Bonney  
Mr. Thomas Buckley  
Mr. Frank Buckman  
Robert & Osla Case  
Mr. & Mrs. William J. Christie  
Mr. Andrew & Mrs. Dorothy Clay  
Mr. Francesco &  
Mrs. Carmencita Crocenzi  
Mr. Donald Dailey  
Mr. John & Mrs. Carolyn Degnin  
James & Scholastica DeHarpporte  
Rev. Wayne Droessler  
Mr. Daniel Fitzgerald  
Ms. Teresa Fronheiser  
Mrs. Diane Galvin  
Armand R. Gennaco  
Mrs. Joan Glendinning  
Dr. Conrado Gomez  
Donna A. Gushen  
Most Rev. Bernard J. Harrington  
Ms. Rosemary Helsabeck  
Mr. C Richard Hollenbach &  
Mrs. Louis M. Hollenbach  
Mr. Robert P. Hollern  
Jane Begley  
Mr. Kenneth H. Holzmeyer  
Rev. John B. Jacquel  
Mrs. Bernice & Mr. Robert Kenkel  
Mr. Kenneth & Mrs. Vickie Konst  
Mr. Walter &  
Mrs. Madeleine Korfmacher  
Rev. Paul P. Koszarek  
Judith R. Lochtefeld  
Mrs. Athalie Macgowan  
Mr. Frank J. Magennis  
Rev. Richard Maynard  
Mr. & Mrs. Harold McCoy  
Mr. John E. Minton  
Mrs. Maria Mullen  
Rev. James Murphy  
Mr. Thomas & Mrs. Jesusa Nadeau  
Christopher Xavier O'Connor  
Mr. James & Mrs. Nancy O'Malley  
Mr. Clarence Razabdouski  
Jane Louise Renze  
Mary P. Richards  
Mrs. Judy Riggs  
Mr. Joseph F. Robek & Miss Mary F. Robek  
Ms. Ann Robilatti  
Mr. Ronald & Mrs. Teresa Rossi  
Mr. Raul Ruiz  
Mr. David Savoy  
Mr. Robert Schappel  
Mr. John & Mrs. Rita Scheffen  
Msgr. Cleo Schmenk  
Ms. Rose Schmidt  
Joan Schmitz  
Richard & Jonella Schwaller  
Mr. William Sheppard  
Mr. Thomas Sheridan  
Mary Ann Singer  
Mr. John & Mrs. Bernice Sisk  
Mr. Joseph & Mrs. Rose Skoviak

**faith. action. results.**

*CRS received an incredible outpouring of support in response to Typhoon Haiyan. Donations from individuals and institutions totaled nearly \$51 million—one of our top three largest emergency collections in the last decade.*

.....

Fr. Michael Slusser  
Mr. Michael Sullivan  
Mr. Robert &  
Mrs. Barbara Timmerman  
Mr. John Tipping  
Ms. Linda Trzyna  
Ms. Catherine Waugh  
Dr. Wayne Weisner  
Frank & Jeri Welsh  
Mrs. Maureen Wesolowski  
Mr. Steve Zoladz

**BEQUESTS**

*CRS gratefully remembers those donors who made provisions in their estate plans in support of the world's poor. The following are the names of those whose bequests were received in fiscal year 2014.*

Marie M. Acevedo  
Rose E. Adam  
Helen Pamela Allen  
Alice R. Anguria  
Patricia & Louis Antonelli  
Anthony A. Anzalone  
Mary Ellen Arbour  
Helen Auth  
Marjorie Jewel Avery  
Mary C. Ayesse  
Florence Baxter Baker  
Gerard C. Ballard  
Roland H. Barthelemy  
Edward Barry  
Joseph Bartak  
Charles Baumer  
Jane Begley  
Frank J. Begue  
Dorothy Helen Bellman  
Ana Belous  
Rosemary C. Bernard  
Walter Lawrence Bettin  
Eugenia A. Bigane  
Edna A. Blersch  
Philip C. Bond  
Margot Borchette  
Anne Brant  
Virgil Braun  
Teresa M. Brawner  
Ralph A. Brennan  
Thomas & Rita Marie Bresler  
Carl A. Buck  
Gerard Buckley  
Donna M. Bugler  
Florence E. Burgess  
Helen E. Buxengard  
Mary Lou Callahan  
Frances Cammarata  
Fr. William G. Carr  
Mary H. Carroll  
Joan M. Case  
Genevieve M. Casey  
Bernice Chocianowski  
Mary Delahanty Clapham  
Mary M. Cleary  
Anna C. Clipp  
John R. Cochran Jr.  
Salvatore Colabrese  
C. J. Collins, Jr.  
Eileen M. Conlan  
Kathleen Connally  
Marie Connelly  
Celestine Connors  
Kathleen Connors

Kathryn Cooke  
Gordon K. Corbitt  
Albert B. Costa  
Mary Costello  
Nancy M. Cotter  
Rev. Robert P. Cozzini  
Meredeth S. Crandlemire  
Ralph Crone  
Genevieve Cunningham  
Marianne Cusmano  
Ruth E. Dameika  
Rosemary Daniel  
Mary F. Darcy  
Clarence R. Defnet  
Carol A. Deutsch  
William Patrick Devine  
George DeWald Jr.  
Edmund Diederichs  
Edward B. Dillon Jr.  
Mary Dineen  
Frida H. Doherty  
Daniel P. Donahue  
Clare T. Donnelly  
Frank Dore  
Virginia K. Dorsch  
Joan Dowling  
Mary Dreitz  
Rey Duarte  
Sylvia Du Bois  
Ralph H. Dwan  
Rev. Frank J. Eimer  
Adele M. Eisenhauer  
Mitzie Eland  
Anna M. Elpers  
Rev. Msgr.  
Donald Endebroock  
Fr. Milo L. Ernster  
Edna M. Fannon  
Esther B. Farrell  
Helen Farrell  
Wesley Faust  
Patrick J. Fegan  
Teresa A. Fehlig  
Angelita Fenker  
Frank J. Finkel  
Mary Ann Fitzpatrick  
Robert J. Flaherty  
Marjory G. Flynn  
John F. Foley  
Cardinal John P. Foley  
Thomas & Elaine Foley  
Kendall C. Fox  
Marie A. Fox  
Helen L. Franklin  
Fr. Lawrence William Friedrich  
William R. Fry  
Fr. Bartholomew C. Fuerst  
Curt Fuhs  
Anna E. Gaffrey  
John R. Gallagher  
Fr. William Gallagher  
Geneva V. Gass  
Veronica Geiger  
Kenneth Gerathy  
Margaret J. Glaser  
Ray Glaze  
Joan Goethel  
Joan Golden  
Mena D. Gomes  
Marie E. Gray  
Geraldine Gutbrod  
Elizabeth Grant Hall  
Ralph A. Halloran  
Kenyon C. Hammack  
Fr. Jean Francis Hart



James A. Helbing  
George Bliss Herrmann  
Raymond Heytens  
Louise A. Hinders  
Dorothy J. Hinkley  
Margaret A. Hinnenkamp  
Richard J. Hofmann  
Rev. Msgr. Robert B. Hoffman  
Shirley Horger  
Mary C. Hunt  
Joan H. Iraneta  
Ms. Theresa Jaruzel  
Merrie L. Jensen  
Donald Johnstone  
Maxine M. Jordan  
Gregor A. Junk  
Fr. George G. Kahle  
Marie V. Kaiser  
Miriam Vann Katuna  
Margaret Kaufmann  
Fr. Charles Keho  
Peter Kelleher  
Jean Kentisbeer  
Helen E. Kestell  
Fr. Ellwood Kieser  
John M. Kilduff  
James R. King  
F. William Kirsch  
Roman P. Koenig  
Evelyn M. Kohlbrecher  
Eugene J. Konkel  
Lucille Kos  
John A. Kozel  
Richard A. Kuhn  
Donald Bernard Kuntz  
Arcade J. Lapointe  
David Russell Latendresse  
Lillian E. Lebart  
Yvonne Letourneau  
Wilfred J. Lex  
Cornelius J. Linehan  
Marie A. Lorenz  
Msgr. Matthew C. Luczycki  
Joseph F. MacIsaac  
James L. Mackey  
Helen E. Maes  
Kathleen Magowan  
Catherine H. Malin  
Dale Manders  
Berthe L. Mangin  
Herman Maricich  
Maurice F. Markway  
John T. Marques  
Elizabeth Martin  
Mary & John McAuliffe  
Marilyn L. Matthews  
Ruth G. McClenning  
Imelda McDonnell  
John J. McGovern  
Rev. Justin N. McIntyre  
Teresa McKenna  
Marie McNamara  
Arthur McNeill  
Joseph Lawrence McNulty  
Joseph Meiring  
Catherine G. Messmer  
Mary E. Meyer  
Florence Michalek  
Eugene & Gertrude Miller  
Victor L. & Patricia E. Miller  
Laila Lois Miller  
Edward Ministri  
Rita Misch  
Rose P. Monti  
Joan F. Mooney  
Mary A. Moser  
Charles Muckenthaler  
Margaret M. Mulholland  
Mary V. Mulvaney  
Sheila Mulvihill  
Catherine Patricia Murphy  
Rev. David Murphy  
Bernie Muus  
Joseph S. Namlik  
Joseph Nealon  
Marjorie Neff  
Fr. Leopold Nicknair

Kristin T. Nielsen  
Leo C. Nolan  
Mary R. & Herman J. Oberkoetter  
Kathleen M. O'Brien  
William O'Connor  
Rev. Charles F. O'Gorman  
Ethel Bridget O'Keefe  
Dorothy Mary Oliver  
Helen Mary Olson  
Arthur J. O'Neill  
Sarah T. Orr  
Harold J. & Ruby B. Pantis  
George Paris  
Msgr. George Parnassus  
Arthur John Patcke  
Ella Pawlowski  
Joseph H. Peck  
Roma Perazzo  
Steve Perez  
Vincent G. Pfiffner  
Bernice C. Phillipp  
Annette Rosemary Plante  
Zenida Pounds  
Alois Prihoda  
Leonard P. Puisis  
Aspasia Radoumis  
Frederic G. Rauber  
William J. P. Ray  
Victoria Regan  
Joseph Leo Reilly  
Marilyn J. & Paul E. Reilly  
Francis G. Riener  
John & Helen Riebe  
Bridie Rielly  
Eugene J. Rietschlin  
Anna Ristuccia  
David Rolfes  
Susan T. Rosenberger  
George P. Ross  
Marian Elizabeth Roth  
Margaret H. Rowe  
Rev. Clifford F. Ruskowski  
Santa "Sadie" M. Ruszala  
Genevieve Ryan  
Magdalen Ryan  
Thomas Saccone  
Elizabeth F. Samkovitch  
Carmen E. Sanchez  
Lupe Sanchez  
Evelyn C. Scarcella  
Mary Agnes Schreck  
Joseph C. Schumacher  
Doreen Scott  
Lorraine M. Sedlock  
Margaret M. Shannon  
Anna T. Sheedy  
John S. Sieger  
Paula Crystal Simmons  
Anne Simmons  
William V. Singleton  
Raymond A. Smalsey  
William John Smith  
Henrietta M. Smythe  
Walter A. Snyder  
Kathleen Soch  
Stanley M. Strachila  
Urban F. Stratman  
Dorthea Stuber  
Paul Sude  
Fr. James E. Sullivan  
Robert & Mary Louise Sweeney  
Joseph S. Szewczak  
Jean H. Takacs  
Yvonne Tata  
Robert Edwin Thome  
Berkley W. Thompson  
John P. Thompson  
Egbert T. & Lucille Timmers  
Thomas F. Tipi  
Nancy Totten  
René J. Tournier  
Frances L. Tucker  
Elaine Tulis  
Mary Turner  
Louis T. Vagnini  
James M. Vandivier  
Caroline Velasquez

James F. Villere  
Fr. Henry E. Villerot  
Cyril M. Vodhanel  
Theresa J. Wallace  
Mary Walsh  
Charles Watts  
Katherine C. Weber  
Joseph Mark Weigman  
Teresa Wernham  
Margaret M. West  
Virginia A. Weyres  
Henry T. Wiggin  
Beth Ann Winebrenner  
Joseph F. Woods  
Helen T. Wrobel  
Robert J. Wurth  
Peggy R. Yancey  
Virginia M. Yates  
Msgr. George William Yontz  
John David Youngblood  
Casimir Zachodny  
Gertrude A. Zagiba  
Josephine Zdunich

## FOUNDATIONS, CORPORATIONS & ORGANIZATIONS

Anonymous (41)  
Academy Place Foundation  
The Achelis Foundation  
Amanter Fund  
Ambrose Monell Foundation  
The American Endowment Foundation  
American Foundation Of Savoy Orders  
Ancient Order of Hibernians  
Center for Arab American Philanthropy  
Argidius Foundation  
Association of Filipinos in Bermuda  
Automationdirect.com Inc.  
Ayco Charitable Foundation  
Bank Of America  
Bank of America Charitable Gift Fund  
Barnard Construction Co. Inc.  
The Base Family Fund  
The Basilica Of St. Mary  
Battelle Employees & Battelle  
The Kenneth S. Battye  
Charitable Trust  
Ben & Jerry's Homemade Inc.  
Benevity American Online Giving Fund  
The Bertch Charitable Gift Fund  
Better Way Foundation  
Big Bend Filipino American  
Association Inc.  
Bischoeffliches Hilfswerk  
Stephen & Renee Bisciotti Foundation  
BMI-Rupp Foundation  
The Boeing Company (Employee  
Contributions)  
**Boettcher Foundation,**  
**William A. & Grace D.**  
Boston College  
Brungardt Oil & Leasing Company  
The Howard G. Buffett Foundation  
C&A Foundation  
**Mary Catherine Bunting Foundation**  
California Community Foundation  
Margaret A. Cargill Foundation  
Caritas Mexicana  
Caruso Produce Inc.  
Catholic Chaplaincy Fund  
Catholic Charities  
Catholic Charities Archdiocese of  
New Orleans  
Catholic Charities Foundation  
Catholic Charities of the Diocese of  
Galveston-Houston  
Catholic Community Foundation  
The Catholic Community Foundation  
of the Archdiocese of St. Paul &  
Minneapolis  
Catholic Health Initiatives  
Catholic Health Partners  
Catholic Health Services Foundation  
Catholic Financial Life  
The Catholic Foundation

Catholic Health Initiatives  
Catholic Health System Inc.  
CCW St. Mary's Council of  
Catholic Women  
Central New York Community  
Foundation Inc.  
Chaplain Corps Accounting Center  
Charitable Auto Resources Inc.  
**The Charles Englehard Foundation**  
Charles Schwab Corporate Foundation  
The Chicago Community Trust  
Christian Charities USA (Local  
Independent Charities)  
CNMK CineMark Texas Properties LLC  
Patricia & John Cochran  
Community Foundation of Acadiana  
Community Foundation of Greater  
Atlanta  
Community Foundation of New Jersey  
Community of the Poor Care Nuns  
Congregation of St. Joseph  
Congregation of the Presentation  
of Mary  
John J. Connor & Irene A. Connor  
Family Foundation  
Coppel Family Foundation  
Cornelius Family Foundation Inc.  
**The Cottrell Foundation**  
Crusade for Family Prayer Inc.  
**Dayton-Phoenix Group Inc.**  
William S. Deakyne Foundation  
Diamantine Family Foundation  
Diantha P. Holman Charitable  
Foundation  
**The Joseph Diehl Family**  
Diehl Family Foundation  
Dominican Sisters of Peace  
Dominican Sisters of  
Springfield, Illinois  
**The Mary J. Donnelly Foundation**  
Dugas Family Foundation  
Richard J. & Mary B. Dwyer Family  
Charitable Trust  
The Edward Colston Foundation Inc.  
The ELMA Foundation  
EnCana Oil & Gas (USA) Inc.  
Equal Exchange Inc.  
ESRI  
Eventbrite  
Exxon Mobil Foundation  
The Father's Table Foundation  
Fidelis Care New York  
Filipino American Association ff the  
Permian Basin  
Filipino American Bayanihan  
Association  
Filipino American Community and  
Development Center  
Filipino Friends of the Cathedral  
Finnegan Family Foundation  
First Clearing LLC  
First Fruits/Broetje Orchards  
Franciscan Missionaries of  
Our Lady Health System Inc.  
The Foley Family Fund  
Foods Resource Bank  
Fordham University  
Fotsch Family Foundation  
Foundation for the Carolinas  
Foundation for the Catholic  
Diocese of Arlington Inc.  
Franciscan Sisters of Chicago  
Service Corp.  
**Franciscan Sisters of Christian Charity**  
Franciscan Sisters of Perpetual  
Adoration  
Franklin Templeton Investment  
Unknown Stock  
Fred B. Snite Foundation  
Freeport-McMoRan Energy Foundation  
Fund for the Poor Inc.  
Bill & Melinda Gates Foundation  
E. L. & Thelma Gaylor Foundation  
GHR Foundation  
Raymond A. & Marie S. Goldbach  
1990 Trust

Goldman Sachs & Company  
Mr. & Mrs. Edward B. Goodnow  
The Graham Family  
Lawrence A. Dollman Fund of the  
Greater Cincinnati Foundation  
Greater Houston Community  
Foundation  
Greater Kansas City Community  
Foundation  
The Greater Milwaukee Foundation Inc.  
Greater Saint Louis Community  
Foundation  
The Griffin Foundation Inc.  
H. W. Wilson Foundation Inc.  
**Chuck & Ellen Haas Foundation**  
Hart Family Charitable Fund  
Quentin & Sally Heimerman Family  
Charitable Fund of the Catholic  
Community Foundation  
Helmsley Charitable Trust  
Henry & Mary Ellen Bellairney  
Family Foundation  
Henry Schein Cares Foundation  
Herman Estate Trust  
The Hildebrand Foundation  
Conrad N. Hilton Foundation  
The Coleman & Margaret Hogan  
Foundation  
Hospital Sisters of the 3rd Order  
of St. Francis  
The Huiscking Foundation Inc.  
The Hunter Cock Fund  
Huntsman International LLC  
**I. A. O'Shaughnessy Foundation**  
IBM Employee Services Center  
Illinois Tool Works Foundation (ITW)  
Inasmuch Foundation  
Gene & Pat Jacoby Foundation  
Raymond James Charitable  
Endowment Fund  
Joerger Family Charitable Foundation  
Quentin J. Kennedy Foundation  
Kenny Foundation Inc.  
Keith V. Kiernan Foundation  
King County Employee Giving Program  
The Klarman Family Foundation  
**The Kopp Family Foundation**  
Keurig Green Mountain Inc.  
**L. M. Sales Associates**  
The Thomas & Dorothy Leavey  
Foundation  
Rhoady & Jeanne Marie Lee  
The Jerry R. Licari Foundation  
Life Outreach International  
Linehan Family Foundation Inc.  
Little Company Of Mary Hospital  
Love of Christ Foundation Inc.  
The Lynch Foundation  
Maryknoll Fathers & Brothers  
The MasterCard Foundation  
Estate of Ruth G. McClenning  
McCurdy Family Trust  
**The McDonald Family Foundation**  
The Catherine J. McGinnis Family  
Foundation  
Mercy  
The Robert Bensen Meyer Jr.  
Foundation Inc.  
Mihatsch Family Trust  
Milton & Fannie Brown Family  
Foundation  
Misereor (Bischöfliches Hilfswerk)  
Missionary Servants of the Most  
Blessed Trinity  
Rose P. Monti Revocable Living Trust  
The Mooney Reed Foundation  
Moonstar Buffet  
Morgan Stanley Global Impact  
Funding Trust Inc.  
Morgan Stanley Smith Barney  
Morse Charitable Foundation  
Mount St. Francis  
The Murphy Family Foundation  
NAF Financial Services  
The National Christian Foundation Inc.  
National Christian Foundation—  
Houston

National Fraternity Secular Franciscan  
Order—USA  
The National Philanthropic Trust  
NCCW Springfield Diocesan Council of  
Catholic Women  
NCCW St. Paul and Minneapolis  
Archdiocesan Council of Catholic  
Women  
New Hampshire Charitable Foundation  
New Horizons Gift Fund  
The New York Community Trust  
The Niner Foundation  
**John C. & Carolyn Noonan Palmer  
Private Foundation**  
North American Province of Cenacle Inc.  
Northern Trust  
Northern Trust Charitable  
Giving Program  
The Northern Trust Company  
The Peter & Kristan Norvig Family Fund  
Oak Tree Philanthropic Foundation  
The O'Connor Family Foundation  
Office of Radio & Television  
Omaha Community Foundation  
Order of the Fishermen Ministry  
Charlie & Mary Beth O'Reilly Family  
Foundation  
The Orokawa Foundation  
Theresa & Edward O'Toole Foundation  
Our Lady of Angels Catholic Community  
Our Lady of China Pastoral Mission  
Our Lady of Consolation Friar  
Our Lady of Lourdes Religious  
Education Program  
Our Sunday Visitor Inc.  
Oxfam America  
**P. K. Tool & Manufacturing Company**  
PAIS Foundation Inc.  
The Pasha Group  
The Patricia M. O'Brien Fund  
**Pawlowski Family Foundation**  
Pax Christi Catholic Community  
PayPal  
Peacehealth  
**The Penates Foundation**  
**Performance Services Inc.**  
The Petunia Foundation  
Philippine Community of Southern  
New Jersey  
Michael and Margaret Picotte Foundation  
Porticus  
Precision International  
The Premonstratensian Fathers  
The Priority Foundation, Inc.  
Providence College  
The Providence Foundation  
Providence Health & Services  
Raskob Foundation for Catholic  
Activities  
**Mark & Karen Rauenhorst Family  
Foundation**  
ReedSmith LLP  
Renaissance Charitable Foundation Inc.  
The Reuter Foundation  
The Rhode Island Foundation  
Philip & Edith Rhodes Fund  
Timothy Arthur Robinson  
Memorial Fund  
The Thomas A. Rodgers Jr. Family  
Foundation  
**Roviaro Foundation**  
Religious of the Sacred Heart of Mary,  
Western American Province  
Ryan Memorial Foundation  
S & E Lynch Charitable Fund  
Sacred Heart Church  
Sagaya Corporation San Antonio Area  
Foundation  
**Lawrence A. Sanders Foundation**  
Santa Clara University  
**Sargento Foods Inc.**  
Sarita Kenedy East Foundation  
SC Ministry Foundation  
**Schaller Corporation**  
Morris & Alma Schapiro Fund  
The Schmeelk Foundation  
Schmidt Family Foundation

Schwab Fund for Charitable Giving  
SCL Health System Inc.  
The Seattle Foundation  
Secular Franciscan Order, St. Anthony  
Fraternity  
SEI Giving Fund  
Seminary of St. Charles Borromeo  
Seminary  
The Semnani Family Foundation  
Thomas E. Sequin Jr. Family Foundation  
Servants of Mary  
SERRV  
Seton Hall University  
The Shaughnessy Family Foundation  
Shrine of St. Joseph  
Silicon Valley Community Foundation  
Sister of Charity of Leavenworth  
Sisters of Providence  
Sisters of St. Casmir Villa Joseph Marie  
Convent  
Sisters of St. Francis of the Neumann  
Communities  
Sisters of St. Joseph  
Sisters of St. Joseph of Carondelet  
Sisters of St. Joseph Orange  
Sisters of the Holy Names of  
Jesus & Mary  
The Sisters of the Immaculate  
Conception  
Sisters of the Precious Blood  
Sisters of the Presentation of Mary Inc.  
Sisters of the Sacred Heart of Mary  
Springfield Diocesan Council of  
Catholic Women  
The Spurlino Foundation  
St. Andrew Abbey  
St. Cloud Catholic Mission Office  
St. Ignatius Jesuit Community  
St. Marys Foundation  
St. Paul & Minneapolis Archdiocesan  
Council of Catholic Women  
**Standard Process Inc.**  
Steffens Foundation  
Stifel Nicolaus & Company Inc.  
Stop World Hunger  
The Strelchun Family Trust  
Sullivan & Cromwell  
T. Rowe Price Foundation  
T. Rowe Price Associate Foundation Inc.  
Tailored for Education  
Ten Thirty Catholic Community  
The Terri & Verne Holoubek Family  
Foundation Inc.  
TIFF Education Foundation  
The Mary Cross Tippmann Foundation  
TOMS  
TOSA Foundation  
Trinity Trust  
Trust Funds Inc.  
Turning Water Into Wine Inc.  
Twin Chimney Inc  
UBS Financial Services  
Under Armour  
United Industries Inc.  
United Way of Central Indiana Inc.  
United Way of Central Maryland  
UWCM  
United Way of Clinton & Essex Counties  
United Way of King County  
United Way of Rhode Island  
United Way Silicon Valley  
United Way of Tri-State (Truist)  
University of Maryland Medical Center  
University of Notre Dame  
USA International Sales Inc.  
Vatican Conference  
The Vaya Con Dios Foundation  
Vista Hermosa Foundation  
W. O'Neil Foundation  
W. T. Rich Company Inc.  
**Wahl Clipper Corp.**  
Walter A. Duffy Charitable Trust  
The Warmenhoven Family Foundation  
Water Access Now  
Waterfall Foundation  
Watersheds Foundation  
Weingartz Family Foundation

Wells Fargo Advisors LLC  
Kirk Williams Co. Inc.  
Wilcox Family Foundation  
Y & H Soda Foundation  
Zaki Family Partnership LP

**MATCHING GIFT COMPANIES**

*CRS appreciates the generous contributions made by the following corporations and by their employees, whose gifts have been augmented through these matching gift programs.*

American Express Foundation  
AMG Engineering & Machining Inc.  
Apple Matching Gift Company Bank of  
America Matching Gifts Program  
Bristol-Myers Squibb Foundation Inc.  
Chevron Humankind Employee  
Matching Funds  
Cisco Systems Inc.  
ConocoPhillips  
Employees Charity Organization of  
Northrop Grumman  
GE Foundation Matching Gift  
GlaxoSmithKline Foundation  
Hewlett Packard Company  
International Monetary Fund Merck  
Employee Giving Campaign  
Matching Gifts  
Microsoft Matching Gift & Giving  
Campaign Program  
Pfizer Foundation  
The Prudential Foundation  
Matching Gift  
Qualcomm Incorporated Matching Gift  
Shell Oil Company  
TE Connectivity Tyco Employee  
Matching Gift Program  
Verizon Foundation  
The Winston Salem Foundation  
World Bank Community  
Connections Fund

**PUBLIC DONORS**

*CRS selectively pursues funding opportunities from a variety of governments and intergovernmental donor agencies to achieve our program strategies and maximize our ability to serve those in need. CRS gratefully acknowledges the financial and in-kind resources received from the organizations that follow.*

European Union  
Food & Agriculture Organization of  
the United Nations  
Gavi Alliance  
Global Fund to Fight AIDS,  
Tuberculosis, & Malaria  
Government of Australia  
Government of Austria  
Government of Bosnia  
Government of Canada  
Government of Cameroon  
Government of Denmark  
Government of Ireland  
Government of Japan  
Government of Honduras  
Government of Lesotho  
Government of Liberia  
Government of Lithuania  
Government of Netherlands  
Government of Norway  
Government of Philippines  
Government of Switzerland  
Government of the United Kingdom  
Inter-American Development Bank  
International Criminal Court Trust  
Fund for Victims  
International Organization for Migration  
UNITAID  
United Nations Children's Fund

United Nations Development  
Programme  
United Nations Office for the  
Coordination of Humanitarian Affairs  
United Nations Office of the High  
Commissioner for Refugees  
United Nations Office for Project  
Services  
United Nations World Food  
Programme  
United States Agency for International  
Development  
United States Department of  
Agriculture  
United States Department of Health &  
Human Services  
United States Department of Labor  
United States Department of State  
United States Institute of Peace  
World Bank  
World Health Organization

**AMBASSADORS OF HOPE**

*CRS established the Ambassadors of Hope to recognize our most generous patrons. The extraordinary philanthropy of Ambassadors of Hope members is a testament to the power of sharing God's bounty of love with those in greatest need.*

Anonymous (36)  
Argidius Foundation  
Better Way Foundation  
Mr. & Mrs. William Brown  
Howard G. Buffett Foundation  
Mary Catherine Bunting  
Ms. Marylane T. Burry  
Robert L. Cahill  
Church of Jesus Christ of  
Latter-day Saints  
The Coppell Family  
The Cottrell Foundation  
Mr. & Mrs. Glenn Creamer  
Carl W. Doty  
The Father's Table Foundation  
William R. Fry  
GHR Foundation  
Albert J. & Diane E. Kaneb Family  
Estate of John J. Koppe  
Mr. & Mrs. Vincent Kyle  
Mr. & Mrs. John J. Leahy  
Estate of Michael Leahy  
Estate of Dorothy J. Marron  
Estate of Ellen M. McNeil  
National Council of Catholic Women  
Rob & Berni Neal  
W. O'Neil Foundation  
Molly & James Perry Jr.  
Presentation Ministries Inc.  
Mr. & Mrs. Christopher C. Quick  
Raskob Foundation for  
Catholic Activities  
Estate of Joseph E. & Margaret M. Rau  
Mark & Karen Rauenhorst  
Robert T. Rolfs Foundation  
Ervin A. Sauer  
The Harold C. Schott Foundation  
L. S. Skaggs Jr.  
Estate of Mary Alice Smith  
Charlie Tippman Foundation  
Vista Hermosa Foundation  
Msgr. Raymond Wahl  
Mary Ann & Art Wigchers  
Agnes N. Williams

*Although we have made every effort to ensure names are listed correctly, if you discover an incorrect name or an omission, please accept our apologies and bring the error to the attention of: Director of Stewardship  
Catholic Relief Services  
228 West Lexington Street  
Baltimore, MD 21201-3443*

**CATHOLIC RELIEF SERVICES**

228 West Lexington Street  
Baltimore, MD 21201-3443

[crs.org](http://crs.org)  
[crsespanol.org](http://crsespanol.org)







When disaster strikes, we join with regional Caritas members to provide immediate aid—a partnership that saves lives and respects the unique needs of every community. CRS also supports Caritas members through training and programming that build long-term community resilience.

- Catholic Agency for Overseas Development (CAFOD)
- Canadian Catholic Organization for Development & Peace
- Caritas Australia
- Caritas Germany
- Caritas Internationalis
- Caritas Switzerland
- Secours Catholique
- Trocaire
- Various other Caritas organizations

